

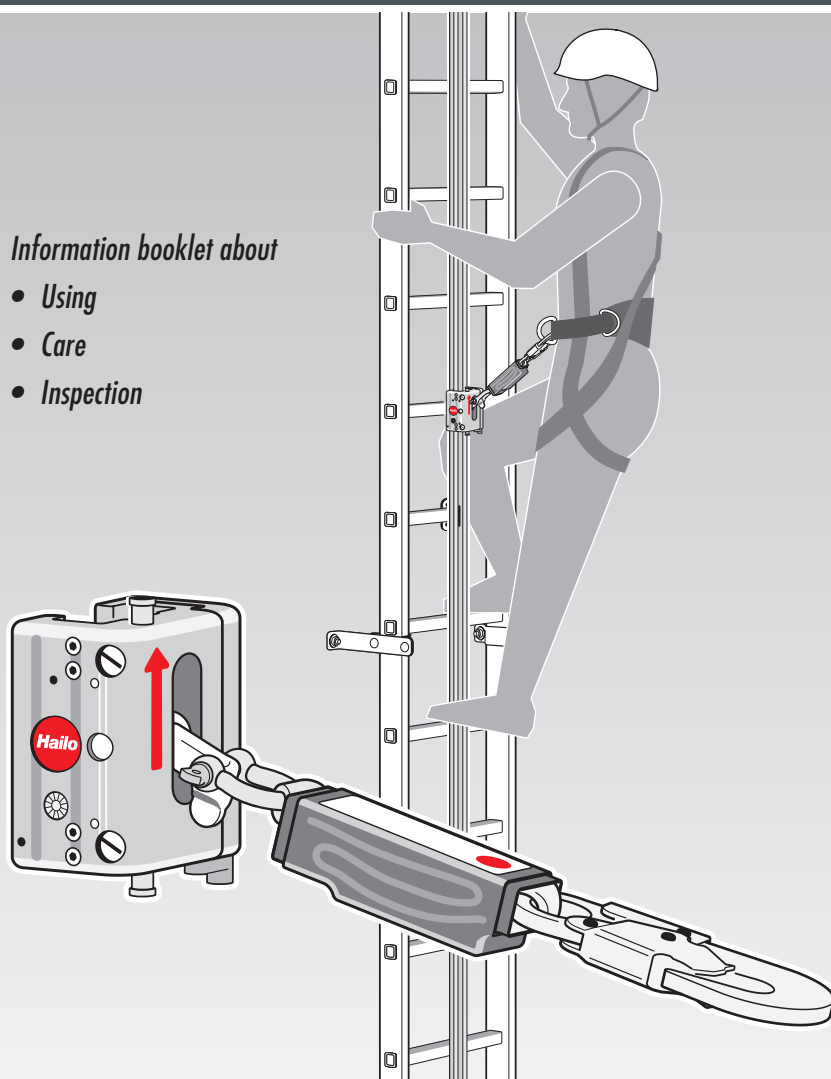
Guided type fall arrester including rigid anchor line - H-50 System

*Hailo PARTNER R1 Fall Arrester and
Integrated BFD-50-136 Shock Absorber*

(EU) 2016/425
DIN EN 353-1:2018

Information booklet about

- *Using*
- *Care*
- *Inspection*



Introduction

For ease of understanding, this brochure has replaced the term used in DIN EN 353-1:2018,
"Guided type fall arrester including rigid anchor line",
with "fall arrest system".

Dear customer,

In purchasing the Hailo PARTNER R1 fall arrester, you have opted for a quality product from the Hailo company.

We thank you for your trust in us.

This information booklet describes how to use, maintain and test the Hailo PARTNER R1 fall arrester.

Please read this booklet thoroughly and note all the safety instructions before you use the Hailo PARTNER R1 fall arrester on the H-50 fall arrest system.

In the event of damage arising due to a failure to respect the details in this information booklet and the safety instructions, the warranty lapses. We accept no liability for consequential losses arising from this.

The Hailo PARTNER R1 fall arrester meets the requirements of the applicable European regulation on personal protective equipment (Regulation (EU) 2016/425).

EU Type Testing was carried out at DEKRA EXAM GmbH
- Prüflaboratorium für Bauteilsicherheit -
Dinnendahlstr. 9, D - 44809 Bochum, Germany
"reference number: 0158".

If you have any other questions or comments about our Hailo PARTNER R1 fall arrester, please don't hesitate to call us.

We'd be delighted to assist.

Hailo-Werk, Rudolf Loh GmbH & Co. KG
Daimlerstr. 2, 35708 Haiger, Germany



+49 (0) 2773 82-0



+49 (0) 2773 82-1561

E-Mail: info@hailo-professional.de
www.hailo-professional.de



EMERGENCY TELEPHONE NUMBERS:

We recommend that all users add the emergency telephone numbers listed below as contacts on their mobile phones.

Emergency services:

.....

Fire service:

.....

Plant operator:

.....

Hailo Service Hotline:

.....

Other important phone numbers:

.....

.....

.....

Table of contents:

<i>Introduction</i>	2
1. <i>Initial Notes</i>	4
2. <i>EC Declaration of Conformity</i>	6
3. <i>EC-Type Test Certificate</i>	7
4. <i>System Details</i>	8
5. <i>Safety Instructions</i>	10
6. <i>Performance Data</i>	16
7. <i>Product Description of the Hailo PARTNER R1 fall arrester</i>	18
8. <i>Use of Hailo PARTNER R1 fall arrester</i>	22
9. <i>Markings and Notices</i>	24
10. <i>Care Instruction</i>	26
11. <i>Inspection Instruction</i>	27
12. <i>Inspection plan Hailo PARTNER R1 fall arrester</i>	28
13. <i>Documentation of the Inspection</i>	32
14. <i>Replacement of BFD-50-136 shock absorber (Documentation)</i>	36

1. Initial Notes

Texts or drawings tagged with these symbols flag up content and dangers that are of particularly importance.

Failure to comply with these instructions may result in injury or loss of life.

Symbols used in this information booklet:



General warning advice



Risk of fatal injury
in the event of a fall.



General instructions



See documentation



Use Personal Protective Equipment
(PPE) against falls from a height



Additional advice

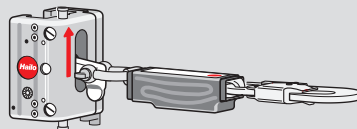


Please read the information provided in this information booklet carefully and thoroughly with respect to the installation, use, maintenance and testing of the H-50 fall arrest system before you use it.

The Hailo PARTNER R1 fall arrester may only be used on a Hailo H-50 fall arrest system.



The use, cleaning and storage of the Hailo PARTNER R1 fall arrester with integrated BFD-50-136 shock absorber must only be in accordance with the specifications set out in this information booklet.



The Hailo PARTNER R1 fall arrester may only be used if all requirements set out in the **Permitted system combinations** table (see page 11) are met.

Other system combinations are not allowed.

Warning: Failure to comply with these requirements will lead to a risk of fatal injury in the event of a fall.

2. EU Declaration of Conformity

The manufacturer or his authorised representative established within the company:

Hailo-Werk, Rudolf Loh GmbH & Co. KG
Daimlerstraße 2, 35708 Haiger, Germany

hereby declares that the

Guided type fall arrester including a rigid anchor line - H-50 System
described in the following pages complies with the provisions of
Regulation (EU) 2016/425 and the standard DIN EN 353-1:2018.

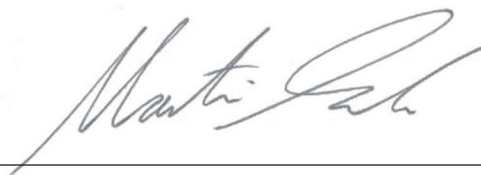
The notified body

Dekra EXAM GmbH - testing laboratory for component safety,
Dinnendahlstraße 9, D - 44809 Bochum, identification no. 0158,
has carried out the EU type examination in accordance with "Module B" and issued the
EC-Type Examination Certificate No. ZP/B194/18.

Furthermore, the PPE is subject to the conformity assessment procedure
in accordance with „Module C2“ under the supervision of the body listed above.

Haiger, 2018-09-14

Place, date



Signature of authorized person (Martin Endres)

3. EU-Type Test Certificate



TRANSLATION

(1) EU-Type Examination Certificate according to Module B Paragraph 6.1 of PPE Regulation (EU) 2016/425

- (2) Regulation of the European Parliament and of the Council of 9 March 2016 relating to personal protective equipment (PPE) - Regulation (EU) 2016/425
- (3) No. of EU-Type Examination Certificate: **ZP/B194/18** replaces ZP/B198/16
- (4) Product: **Guided type fall arrester including a rigid anchor line
Type: H-50**
- (5) Manufacturer: **Hailo Werk Rudolf Loh GmbH & Co. KG**
- (6) Address: **Daimlerstraße 8, 35708 Haiger, Germany**
- (7) Risk category: **III**
- (8) The design and construction of this personal protective equipment and any acceptable variation thereto are specified in the appendix to this EU type-examination certificate.
- (9) The certification body of DEKRA EXAM GmbH, Notified Body No. 0158 according to Chapter V of Regulation (EU) 2016/425 of 9 March 2016, certifies that this personal protective equipment has been found to comply with the essential Health and Safety Requirements given in Annex II to the Regulation. The evaluation results are recorded in report PB 18-197.
Other possibly applicable Union legislations applicable to the specified personal protective equipment have not been taken into account in this EU-type examination certificate.
- (10) The essential Health and Safety Requirements are assured in consideration of
DIN EN 353-1:2018
- (11) This EU type-examination certificate relates only to the design, examination and tests of the specified personal protective equipment in accordance to Regulation (EU) 2016/425.
For category III personal protective equipment, this EU type-examination certificate may only be used in conjunction with one of the conformity assessment procedures referred to Article 19 (c).
- (12) When applying the CE Marking according to Article 16 and 17 of Regulation (EU) 2016/425 to the products that conform to the types examined, the client is obliged to add, in accordance with the attached pattern, the identification number of the Notified Body engaged in the conformity assessment according to Module C2 or D.
Furthermore, the manufacturer is obliged to issue an EU declaration of conformity in accordance with Article 15 of Regulation (EU) 2016/425 and to enclose it with the personal protective equipment, or to indicate the Internet address in the manual and in the instructions in Annex II, point 1.4., at which the EU declaration of conformity can be accessed.
- (13) This EU-Type Examination Certificate is valid until 2023-09-13

DEKRA EXAM GmbH
Bochum, 2018-09-14

Signed: Wiegand
Certification body

Signed: Mühlenbruch
Special services unit

We confirm the correctness of the translation from the German original.
In the case of arbitration only the German wording shall be valid and binding.

Certification body

Special services unit



Page 1 of 4 of ZP/B194/18
This certificate may only be published in its entirety and without any change.
DEKRA EXAM GmbH, Dinnendahlstrasse 8, 44809 Bochum, Germany
Telephone +49 234 3696-105, Fax +49 234 3696-110, zs-exam@dekra.com

Expiry date:

Signature of manufacturer (Company stamp)



Information on User: *(to be completed by the user)*

Name (User): Company:

Telephone: Fax:

Street: Postcode, Town:

E-Mail:

Date of the first use:

Date

Signature of user

5. Safety Instructions



Instructions for use of the Hailo PARTNER R1 fall arrester on the H-50 fall arrest system:

- On tall buildings or for deep shaft facilities, fall arrest systems are a mandatory requirement above a fall height
 ≥ 5 m (per DIN 18799-1) or
 ≥ 3 m (per EN ISO 14122-4).
- The H-50 fall arrest system is designed as a fall safety when using rung ladders and pole climbers, both above ground and below ground.
- Rails are mounted (to the side or centrally) on the ladders or pole climbers attached to the construction; these serve to guide the Hailo PARTNER R1 fall arrester.
- The accident prevention regulations DGVV regulation 1 and DGVV rules 112-198/199 (Germany) must be respected.
- The system itself must be inspected for damage by trained and/or authorised personnel (see H-50 fall arrest system information booklet). The result of this inspection must ensure beyond all doubt that the system is in a safe condition and in safe working order. If this is not the case, the appropriate repairs are to be carried out professionally.
- Only system components from Hailo must be used for the H-50 fall arrest system. It is not permitted to use Hailo parts in conjunction with those of other manufacturers. Where the use of other manufacturers' components is unavoidable, this requires written authorisation from Hailo.
- The Hailo PARTNER R1 fall arrester is tested and approved together with the Hailo H-50 fall arrest system as one complete system.
- Using the Hailo PARTNER R1 fall arrester on systems supplied by other manufacturers is not permitted and failure to comply may result in failure of the Hailo PARTNER R1 fall arrester.
- Failure to comply may also impair the safe working order of one part of the equipment and there is a possible risk of falling or injury.
- For assembly, servicing or repair work, it must be ensured that no scaffolding, platforms or other items might project into the potential fall area and thus constitute an additional danger in the event of a fall.
- The H-50 fall arrest system meets the highest safety requirements. It is tested and certified according to European and other international regulations. The use of climbing aids (either motor-driven or systems based on a counterbalance weight) may impair the safety function of the H-50 fall arrest system with an Hailo PARTNER R1 fall arrester.
 Any operator and company who combine the two systems (climbing aid and H-50 fall arrest system) are responsible for ensuring that they are used solely in accordance with the regulations. A function test with subsequent declaration of non-objection – conducted and certified by an accredited test laboratory – is therefore essential.
 The unrestricted safety and function of the H-50 fall arrest system in conjunction with the respective climbing aid must be assured and documented.



Permitted system combinations

For safe use of the Hailo PARTNER R1 fall arrester the following guidelines must be observed:

- Deviation of fall arrest rail (Mat.: stainless steel / galvanized steel) to the vertical = max. $\pm 1^\circ$,
- Deviation of fall arrest rail (Mat.: aluminium) to the vertical = -3° to $+15^\circ$
- Hailo PARTNER R1 fall arrester is approved for the following total weight:
(total weight = body weight of the user, including clothing and equipment)

Mat. fall arrest rail =	Aluminium	Stainless steel	Steel galvanized
Inclination angle of the fall arrest rail	-3° to $+15^\circ$	0°	0°
Max. weight of the user	50 to 136 kg	60 to 100 kg	60 to 100 kg

- The Hailo PARTNER R1 fall arrester on the H-50 fall arrest system does not provide protection when the user is in the lower section of the climbing unit (i.e. < 3 m from the top edge – access level). Please note the performance data on page 16/17.
- Before each use of the H-50 fall arrest system, a visual check of the system and the function of the Hailo PARTNER R1 fall arrester must be carried out, employing the information booklet.
- The user of the fall arrest system must be physically and mentally capable of movement using the respective equipment. If he has been required to take medicines in advance of using the equipment, it is advisable to find out about possible side-effects which might result in impairment or physical injury if moving around using the equipment.
- The user of the fall arrest system should never be alone when using the system, as a second person should be available to call for immediate help in the event of an accident. It is strongly recommended that users always carry a mobile phone.
- The contractor or operator of a plant must put in place a plan which covers all possible emergencies that might arise when using the fall arrest system and outlines the measures required for rescuing personnel.

Prior to starting work, the user of the H-50 fall arrest system must seek information from the plant operator regarding this emergency plan as well as any rescue measures that might be necessary and how to initiate and execute them.
- No more than 5 persons may use the fall arrest system at the same time. The distance between individual users must be at least 6 m.

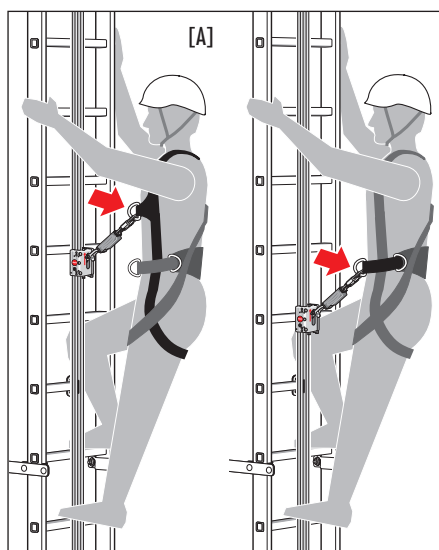
5. Safety Instructions



Personal Protective Equipment (PPE) / Hailo PARTNER R1 fall arrester:

- The Hailo PARTNER R1 fall arrester is tested and approved together with the Hailo H-50 fall arrest system as one complete system.
- When using a combination of equipment parts (e.g. combining a user-specific safety harness with the Hailo PARTNER R1 fall arrester), it is a mandatory requirement that this should not result in any impairment of the overall system. In the event of a fall, any impairment may result in the failure of the fall arrester.
- Modifications to or the use of non-Hailo parts with the Hailo PARTNER R1 fall arrester without the manufacturer's written authorisation are prohibited.
- Personal protective equipment may only be used for the intended purpose and by such persons as have been instructed in its safe use and who possess the corresponding knowledge.
- The Hailo PARTNER R1 fall arrester should be in the personal possession of the respective individual and is for their personal use only. It is not advisable to allow it to be used by a wider group of people.
- The Hailo PARTNER R1 fall arrester may only be used for climbing and descending using the H-50 fall arrest system. The use of this equipment for a purpose for which it is not intended is expressly forbidden, since this can lead to damage and thus failure of the Hailo PARTNER R1 fall arrester in the event of a fall.
- The Hailo PARTNER R1 fall arrester may not be used for work positioning. If work positioning is required, a separate system must be used.
- Various factors may interfere with the safe working of the Hailo PARTNER R1 fall arrester. These include extreme weather conditions, chemical action or mechanical factors (e.g. sharp edges, oil, ice, etc.). The equipment must not be used in such circumstances.
- Before using the fall arrest system with the Hailo PARTNER R1 fall arrester, the system must be inspected to ensure it is in good working order. It is not permitted to use the equipment where there are instructions regarding severe icing or contamination of the fall arrest system or where there is already severe icing or contamination.
- The Hailo PARTNER R1 fall arrester is designed for use in temperatures ranging from - 40°C to + 50°C. Other types of extreme weather conditions, such as temperatures < - 40°C and > + 50°C, ice, snow or water, may impair the function of the fall arrester. The fall arrest system must not be used in these conditions.
- Connecting parts on the fall arrester must not be lengthened or shortened.

- Only safety harnesses which comply with EN 361 are permitted for use with the Hailo PARTNER R1 fall arrester on the fall arrest system. Please note the instructions for use for the safety harnesses used. Do not use any support harnesses, seat harnesses, elasticated harnesses or older Form B safety harnesses which only partially enclose the body. These harnesses should not be used when climbing.
- The karabiner clip on the shock absorber may only be attached to the authorised retaining eye on the safety harness [A]. The Hailo PARTNER R1 fall arrester must not be connected to any retaining eyes to the sides of the safety harness that may be provided as an additional element in the hip area.
- The safety of the user of the fall arrest system depends on the effectiveness of the equipment!



The Hailo PARTNER R1 fall arrester may only be used if all requirements set out in the **Permitted system combinations** table (see page 11) are met.

Other system combinations are not allowed.

Warning: Failure to comply with these requirements will lead to a risk of fatal injury in the event of a fall.

5. Safety Instructions

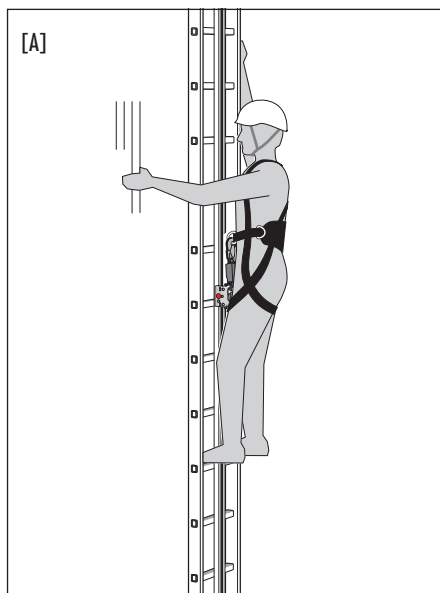


Personal Protective Equipment (PPE) / Hailo PARTNER R1 fall arrester:

- While climbing or descending, the fall arrester is attached to the rail and must not be handled or manipulated by the user.
Such action may impair or even prevent the braking action of the equipment.
For reasons of safety, the user is not permitted to grip or manipulate the fall arrester while climbing or descending, except when the user is in a position of safety and there is no risk of falling.
- When a system or components of a system have been subjected to stress as a result of a fall, they are no longer approved for further use.
In this case, the Hailo PARTNER R1 fall arrester must be returned to the manufacturer for testing and/or repair.
Repairs to the Hailo PARTNER R1 fall arrester may only be carried out by the manufacturer.
- Only original Hailo parts may be used on the Hailo PARTNER R1 fall arrester.
Defective or worn parts may only be replaced by Hailo parts.

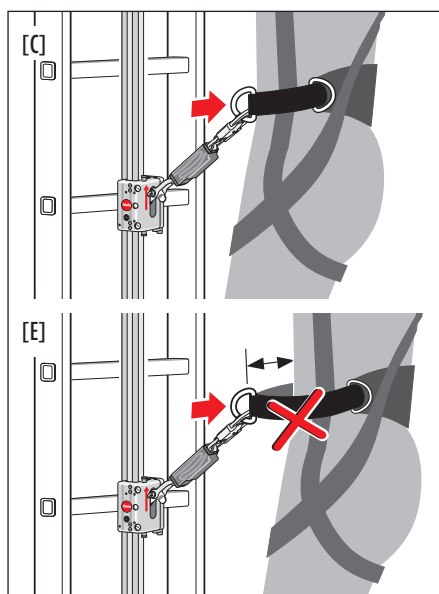
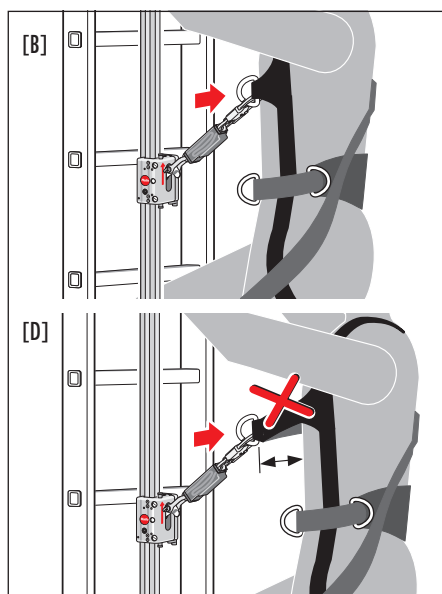
Additional attaching elements:

- The lengths of the attaching elements for supplementary fall safety systems should be selected to be as short as possible, so that in the event of a fall the distance of the fall is correspondingly limited.
- Additional attaching elements, e.g. Y harnesses, should only be attached to the fastening-points provided for them (DIN EN 795).



The user should basically avoid standing in a position on the fall arrest rail where they are directly above the fall arrester [A].

Warning "Risk of falling"!



The safety harness must sit firmly on the body and be correctly adjusted [B], [C].

It is forbidden to use the fall arrest system with a loose safety harness that has not been adjusted to provide a sufficiently tight fit [D], [E].



Failure to comply with the safety instructions on pages 10-15 will invalidate the manufacturer's warranty.

6. Performance Data



For the H-50 fall arrest system, calculating the performance data and the necessary free space to arrest the person in the event of a fall indicates a safe distance of 3 m.

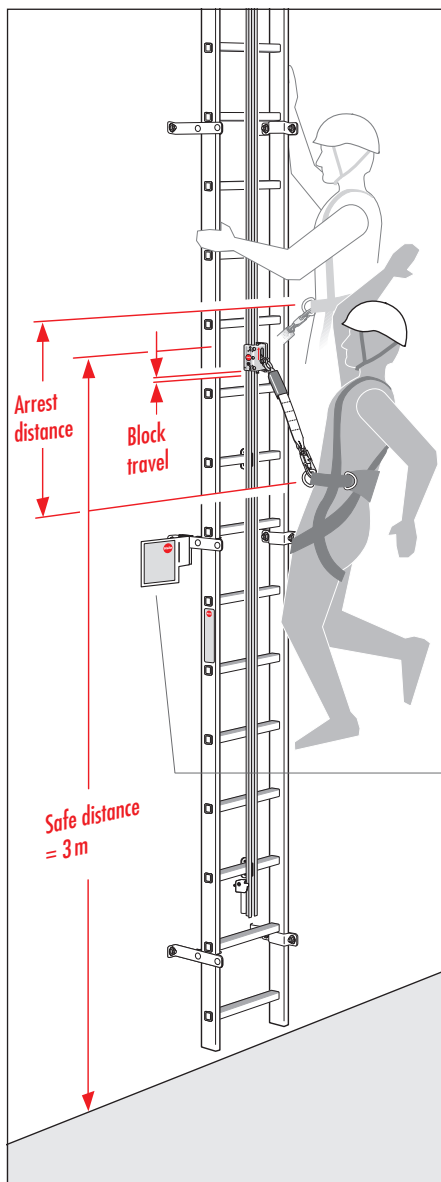
The Hailo PARTNER R1 fall arrester on the H-50 fall arrest system does not provide protection when the user is in the lower section of the climbing unit (< 3 m from the upper edge – access level).



The plant operator must install a corresponding warning notice (see the Sticker on Safe Distance) on the building to inform the user beyond all doubt regarding the safe distance.

The H-50 Fall Arrest System must be identified with a type plate at the point of access which indicates the type of fall arrester to be used with the H-50 Fall Arrest System.

When new types of fall arrester are used, the operator must ensure that this information is clearly visible to the user.



Note to H-50 fall arrest system:

Hailo H-50 System gemäß DIN EN 353-1:2018

Darf ausschließlich mit dem Auffanggerät SPL-50-R3 und Hailo PARTNER R1 in Verbindung mit Auffanggurten nach EN 361 genutzt werden.

ACHTUNG!

- Die Schutzwirkung des Auffanggerätes ist ab 3 m Steighöhe über Zugangsebene gegeben! (Sicherheitsabstand = 3 m)
- Zwischen 2 steigenden Personen ist ein Abstand von mindestens 6 m einzuhalten.
- Max. 5 Personen dürfen das Steigschutzsystem gleichzeitig benutzen.

Hailo H-50 System according to DIN EN 353-1:2018

May only be used with Hailo SPL-50-R3 and Hailo PARTNER R1 safety harness in conjunction with EN 361 compliant safety belts.

ATTENTION!

- The safety harness provides protection from a height of 3 m above the access level! (Safety margin = 3 m)
- There should always be a gap of at least 6m between any two people on the fall arrest system.
- No more than 5 persons may use the fall arrest system at any one time.

Hailo H-50 Système conforme à DIN EN 353-1:2018

Doit être utilisé exclusivement avec l'antichute SPL-50-R3 et Hailo PARTNER R1 et avec des harnais de sécurité selon EN 361.

ATTENTION!

- L'effet protecteur de l'antichute n'est réalisé qu'à partir de 3 m de hauteur au-dessus du niveau d'accès ! (distance de sécurité = 3 m)
- Entre deux personnes utilisant l'accès une distance d'au minimum 6m doit être respectée.
- 5 personnes au maximum peuvent utiliser en même temps le système de protection d'accès en hauteur.

CE 0158



1115529 - 09/2018 DE,GB,FR

Informationsbroschüre beachten!

Observe Information Manual!
Lire attentivement le manuel d'information.



Zutreffendes bei der Montage eintragen bzw. ankreuzen.

For assembly, enter or tick as applicable.
Pour le montage, entrer ou pointer selon le cas.

Montiert
Assembled
Monté

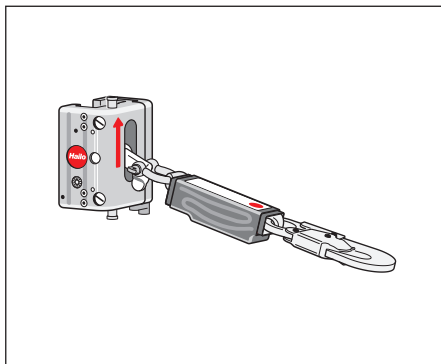


Nächste Prüfung
Next inspection
Prochaine inspections



Hailo-Werk
Rudolf Loh GmbH & Co. KG
Daimlerstraße 2
35708 Halger, Germany

7. Product Description of the Hailo PARTNER R1 Fall Arrester



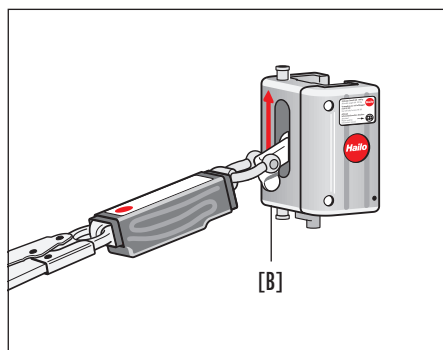
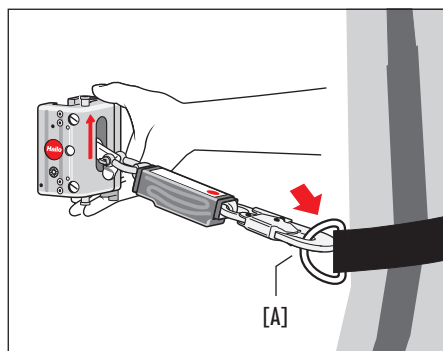
Before using the Hailo PARTNER R1 fall arrester, read this information booklet through in full. Take note of the safety instructions (Pages 10 to 15)!



The fall arrester can only be attached to or detached from the fall arrest system from a safe standing position. Please note the instructions for entering and exiting the ladder (pages 20-23).

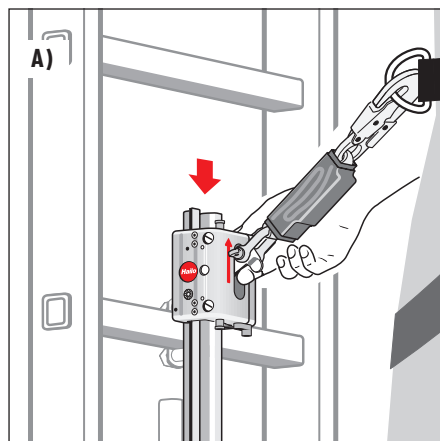
Warning: Failure to comply with these requirements will lead to a risk of fatal injury in the event of a fall.

- The Hailo PARTNER R1 fall arrester is designed for fall arrest equipment pursuant to DIN EN 353-1:2018 and is suitable as reliable fall protection on ladders and pole climbers.
The Hailo PARTNER R1 fall arrester satisfies the regulations set out under DIN EN 353-1:2018.
- The Hailo PARTNER R1 fall arrester is attached to the H-50 fall arrest rail before climbing/descending. The Hailo PARTNER R1 fall arrester when attached to the rails is fitted with a BFD-50-136 shock absorber and is connected to the user's safety harness.
- The fixed and integral BFD-50-136 shock absorber (DIN EN 353-1:2018) must be replaced on reaching its expiry date (i.e. every five years). The shock absorber may only be replaced by the manufacturer.
- The Hailo PARTNER R1 fall arrester is approved solely for the protection of the user. Safety is guaranteed when climbing and descending as the fall arrester is easy to attach to the H-50's fall arrest rail and it has a self-locking function in the event of a fall and glides easily along the fall arrest rail without obstructing the user.
- Before using the fall arrest system with the Hailo PARTNER R1 fall arrester, the system must be inspected to ensure it is in good working order.
It is not permitted to use the equipment where there are instructions regarding severe icing or contamination of the fall arrest system or where there is already severe icing or contamination.



- Before using the fall arrester, the fixed and integral spring hook on the shock absorber must be clipped onto the retaining eye on the safety harness (pursuant to EN 361), which should be put on beforehand [A].
- The Hailo PARTNER R1 fall arrester should only be introduced into the profiled rails in the correct direction of pull (red arrow pointing upwards) [B]. It is designed such that it is not possible to thread the device incorrectly onto the rail.

A) Attaching and removing the fall arrester at the start and end of the fall arrest rail



- The fall arrester can be attached directly to the rail using only one hand at the entry and exit points provided on the Hailo PARTNER R1 fall arrest system (at the start and end of the fall arrest rail).
- The thumb holds the fall arrester by the upper housing part and the index finger grips underneath the brake lever. This brings the brake lever up, allowing the fall arrester to be easily attached to the rail.
- Follow the same procedure when removing the fall arrester from the fall arrest rail.

7. Product Description of the Hailo PARTNER R1 Fall Arrester

B) Attaching and removing the fall arrester along the ladder

The fall arrester can be attached directly to the fall arrest rail along the ladder.

The fall arrester needs to be operated with both hands.

• 1. Releasing the fall arrester

Take the fall arrester in the left hand as illustrated, use the thumb and the index finger to press both release buttons [A] while at the same time turning the brake lever [B] up with the little finger. The brake lever is now in the open position (continuous running position).

• 2. Opening the fall arrester

Pull the slide [C] outwards using your right hand.

• 3. Attaching the fall arrester

Attach the fall arrester to the profile of the fall arrest rail, first from the left and then from the right.

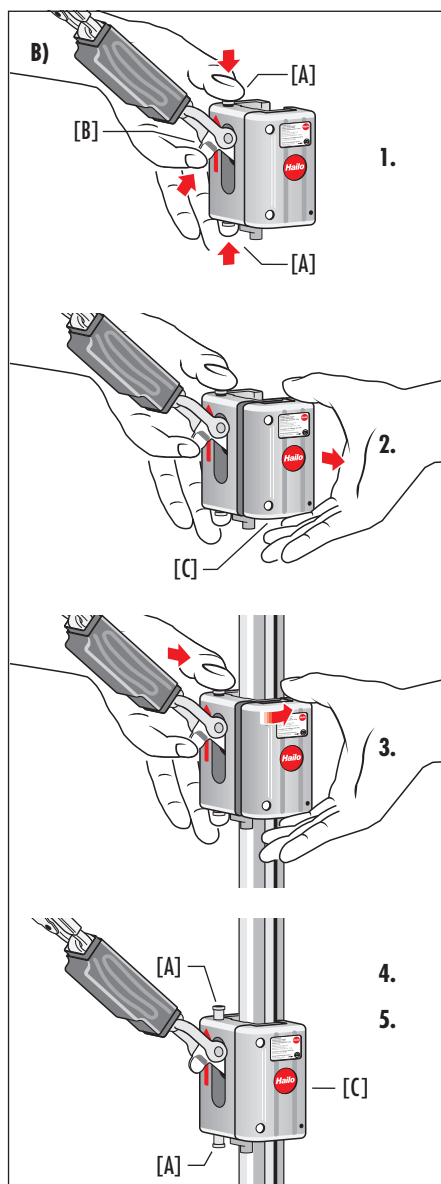
• 4. Locking the fall arrester

Release the slide [C] first, then release both buttons [A].

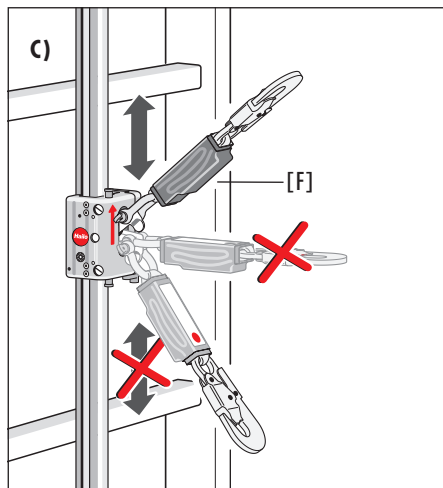
• 5. Check

The fall arrester must be correctly positioned, closed and locked on the fall arrest rail.

Follow the same procedure when removing the Hailo PARTNER R1 fall arrester from the fall arrest rail, but the fall arrester is first removed from the profile of the rail from the right.

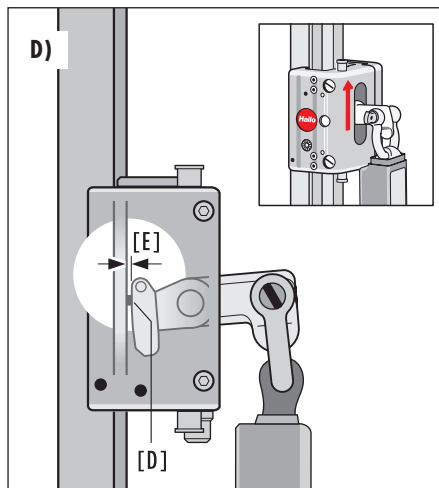


C) Check and function test:



- The Hailo PARTNER R1 fall arrester must first be checked visually prior to use.
- The shock absorber must move freely on the fall arrester.
- When the shock absorber is pulled upwards, the Hailo PARTNER R1 fall arrester must be released from locking and run easily up and down the rail.
- When the shock absorber is released, the Hailo PARTNER R1 fall arrester must lock on the rail within 30 mm without slipping.
- When the Hailo PARTNER R1 fall arrester has been tested successfully to ensure it is working properly, it is ready for use and the user can climb or descend in safety.
- If there is any doubt as to whether it can be used safely, the fall arrester must be taken out of service immediately.

D) Checking the wearing points at the brake lever



- In the regular testing of the Hailo PARTNER R1 fall arrester (see inspection plan on pages 28-31), the two wear points [D] on the surface of the brake must be tested as follows:
- Lock the Hailo PARTNER R1 fall arrester on the fall arrest rail. Use the feeler gauge to check the thickness [E] of the wear points on the surface of the brake.
- If the measured value is ≤ 0.05 mm, the brake lever must be replaced. Only Hailo is allowed to replace the brake lever.

8. Use of Hailo PARTNER R1 Fall Arrester

Notes on entry and exit



Before using the end-stop or the pivoting withdrawal point, the user must be secured against falling either universally or by means of a safety system.

At no time should there be any risk of falling!

Using the end-stop:

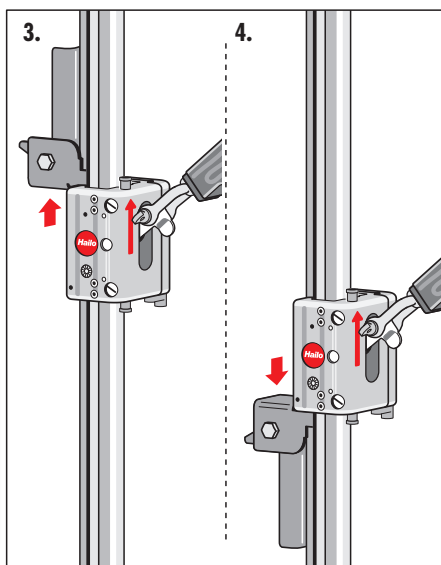
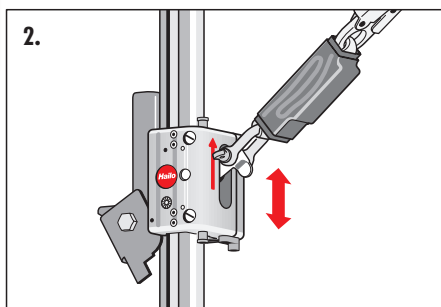
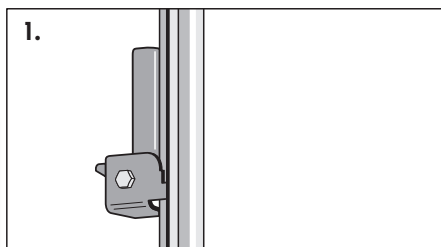
There is an end-stop at the entry and exit points at the bottom and top of the ladder.

All entry and exit points must be accessible from a safe standing position.

1. End-stop in rest position.
2. End-stop in continuous running position.
3. End-stop in braking position (fall arrest system above).
4. End-stop in braking position (fall arrest system below).
5. Before the end-stop is put into the continuous running position, the user must be fixed to a secure fastening point (EN 795-compliant) by some means of attachment.



Any places on the fall arrest system where the Hailo PARTNER R1 fall arrester might inadvertently slip out must be secured with an end-stop.



Safety Instructions



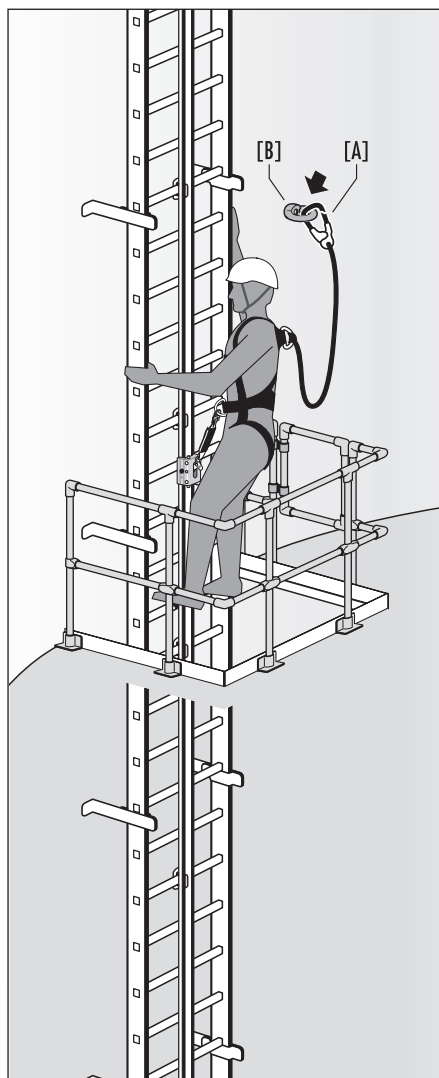
Both on entering and leaving the fall arrest system, the user must be secured to an approved fastening point appropriate to local conditions to prevent falling. This requires the karabiner clip [A] of the attachment – in accordance with EN 363 – to be attached either to an approved fastening point [B] – in accordance with EN 795 – on the building or to another structure.

- The existence and position of approved fastening-points must be clarified with the plant operator.
- Stop points and stop devices used in a climbing system are to be positioned such that free falling and the fall height are restricted to a minimum. The fastening point must be within the radius of action for the user while still secured.
- In general, the user should always select stop devices/ stop points that are situated above them. A check should be made for possible stop points and stop devices before each use.

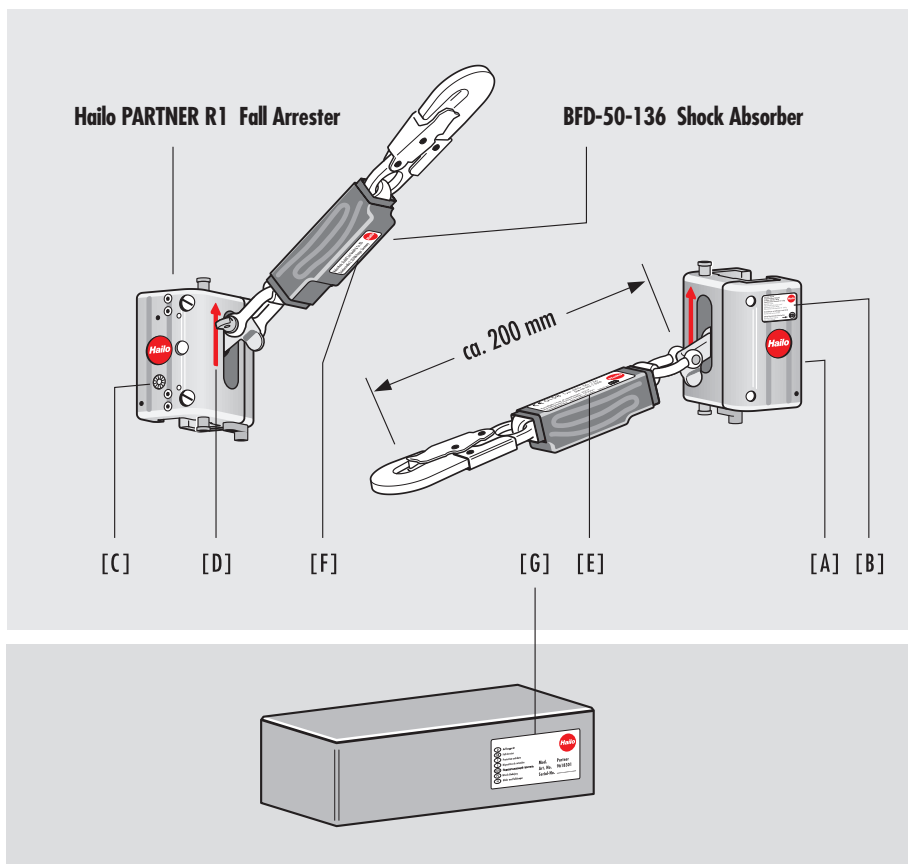


The system may only be entered or left from a safe standing position.

At no time should there be any risk of falling!



9. Markings and Notices





Please pay special attention to all markings, stickers with safety information and safety regulations.

[A] Type plate on Hailo PARTNER R1 fall arrester

[B] Safety note

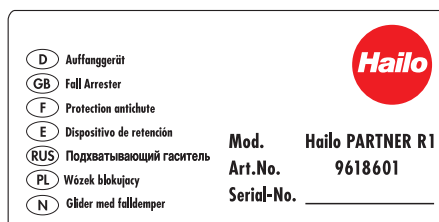
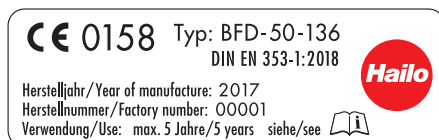
[C] Test badge

[D] Arrow marking THIS WAY UP

[E] Type plate on BFD-50-136 shock absorber

[F] Shock absorber address sticker

[G] Packaging label



10. Care Instruction

Cleaning:

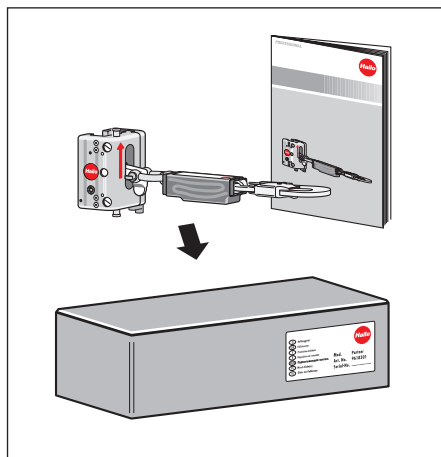
- If the Hailo PARTNER R1 fall arrester should unintentionally become dirty through the use of concrete dust, sand, earth or other materials, it can be cleaned using warm water (max 40° C) and an acid-free cleaner.
- The arrester should be allowed to dry naturally, but the process can be accelerated using careful air-blowing. Drying underneath or against heat sources is not permitted.
- Other procedures for cleaning the fall arrester are not permitted and can result in the fall arrest system failing in the event of a fall.
If in doubt, contact the manufacturer.

Testing and maintenance:

- Recurrent testing and servicing of the Hailo PARTNER R1 is to be carried out at least once a year in accordance with the listed schedule for testing and servicing. The testing plan and documentation for the Hailo PARTNER R1 fall arrester are found on pages 28-35.
- This testing and maintenance can be carried out by the manufacturer or other expert/authorised person (cf. DGUV Guideline 312-906, Germany).
- The working life of the integral shock absorber on the Hailo PARTNER R1 fall arrester is a maximum of 5 years.
After that time, the Hailo PARTNER R1 fall arrester must be fitted with a new shock absorber.
This refit may only be carried out by the manufacturer.
- The safety harness (EN 361) can be ordered through Hailo.

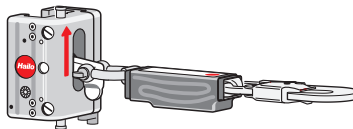
Storage:

- The Hailo PARTNER R1 fall arrester must be stored in a dry location to which the user has access. Temperatures $< -40^{\circ}\text{C}$ or $> +50^{\circ}\text{C}$ or contact with oils, acids or other corrosive liquids is not permitted.
- The Hailo PARTNER R1 fall arrester can be stored and transported in the supplied packaging or a suitable container.



Inexpert storage or transport may result in damage to the Hailo PARTNER R1 fall arrester and thus to failure in the event of a fall.

Hailo PARTNER R1 fall arrester with integrated BFD-50-136 shock absorber



- DIN EN 353-1:2018 -compliant fall arresters must be inspected and documented for good working order and functionality at least once a year by trained/ authorised personnel.

A trained/authorised person is:

A person who on the basis of specialist training (cf. DGVV Guideline 312-906/TRBS 1203) and their personal experience, has gained the necessary knowledge for this safety device, and who is also familiar with the generally recognised state-of-the-art and the relevant guidelines to the extent that they can assess its safe condition for use and its appropriate application.
- The testing of all components, each individual subsystem and system must be documented.
- In addition, regular checks must be made depending on the respectively applicable environmental conditions. This can mean that the intervals between testing are correspondingly shortened.
- In the event of a fall, the Hailo PARTNER R1 fall arrester must be returned immediately to the manufacturer for inspection.
- Inspection and maintenance of the Hailo PARTNER R1 fall arrester must always be carried out respecting the instructions in full.
- The plant operator is responsible for ensuring that testing and maintenance intervals are observed.



Testing must adhere to the respective national operating and testing regulations.



Regular checks of the equipment are a mandatory requirement. The safety of the user is dependent on the effectiveness and the durability of the equipment.

12. Inspection plan Hailo PARTNER R1 Fall Arrester

Test schedule for regular testing of the Hailo PARTNER R1 fall arrester

Annual tests are to be documented in the table on pages 32-35 by trained/authorised personnel:

In the event of a claim, this documentation must be available in full as evidence. The manufacturer must be granted access to this at all times.

Result:



1. Hailo PARTNER R1 fall arrester, general condition	Check for damage, corrosion and contamination
2. Fall arrester housing	Technical condition
3. Slider right	Technical condition and function
4. Rail rollers	Ease of movement and technical condition
5. Anti-twist lock - ABOVE	Movement and function
6. Anti-twist lock - BELOW	Movement and function
7. Anti-twist lock pin	Technical condition
8. Brake lever	Movement, functional surfaces and technical condition
9. Brake lever (wear points)	Check thickness, min. > 0.05 mm, see page 21, D)
10. Brake lever - recuperating spring	Impact and condition
11. Screw connections	Technical condition and preload force
12. Cylinder pin (brake lever)	Seat, condition and any safety coating
13. Pins and dowel pins	Seat and condition
14. Shackle	Lock pin (safety sticker)
15. Brake lever protection	Securely attached and contour has cut edges
16. Cross axes	Function and movement
17. Release	Function and movement
18. BFD-50-136 shock absorber	Condition, stitching and supporting belt (blue belt)
19. BFD-50-136 shock absorber	Condition of packaging in heat-shrunk sleeve
20. Karabiner dip	Condition, function and safety catch
21. Original markings	Are the serial number, type details, etc., easily legible?
22. Hailo PARTNER R1 function test	Use on H-50 fall arrest system
23. Period of use of BFD-50-136	Has the period of use expired?
24. Test badge for Hailo PARTNER R1 fall arrester	Has a test badge been awarded



Inspection 1		Inspection 2		Inspection 3		Inspection 4		Inspection 5	
/		/		/		/		/	
Date (Month/Year)		Date (Month/Year)		Date (Month/Year)		Date (Month/Year)		Date (Month/Year)	
OK	not OK	OK	not OK	OK	not OK	OK	not OK	OK	not OK
<input type="checkbox"/>	<input type="checkbox"/>	<input type="checkbox"/>	<input type="checkbox"/>	<input type="checkbox"/>	<input type="checkbox"/>	<input type="checkbox"/>	<input type="checkbox"/>	<input type="checkbox"/>	<input type="checkbox"/>
<input type="checkbox"/>	<input type="checkbox"/>	<input type="checkbox"/>	<input type="checkbox"/>	<input type="checkbox"/>	<input type="checkbox"/>	<input type="checkbox"/>	<input type="checkbox"/>	<input type="checkbox"/>	<input type="checkbox"/>
<input type="checkbox"/>	<input type="checkbox"/>	<input type="checkbox"/>	<input type="checkbox"/>	<input type="checkbox"/>	<input type="checkbox"/>	<input type="checkbox"/>	<input type="checkbox"/>	<input type="checkbox"/>	<input type="checkbox"/>
<input type="checkbox"/>	<input type="checkbox"/>	<input type="checkbox"/>	<input type="checkbox"/>	<input type="checkbox"/>	<input type="checkbox"/>	<input type="checkbox"/>	<input type="checkbox"/>	<input type="checkbox"/>	<input type="checkbox"/>
<input type="checkbox"/>	<input type="checkbox"/>	<input type="checkbox"/>	<input type="checkbox"/>	<input type="checkbox"/>	<input type="checkbox"/>	<input type="checkbox"/>	<input type="checkbox"/>	<input type="checkbox"/>	<input type="checkbox"/>
<input type="checkbox"/>	<input type="checkbox"/>	<input type="checkbox"/>	<input type="checkbox"/>	<input type="checkbox"/>	<input type="checkbox"/>	<input type="checkbox"/>	<input type="checkbox"/>	<input type="checkbox"/>	<input type="checkbox"/>
<input type="checkbox"/>	<input type="checkbox"/>	<input type="checkbox"/>	<input type="checkbox"/>	<input type="checkbox"/>	<input type="checkbox"/>	<input type="checkbox"/>	<input type="checkbox"/>	<input type="checkbox"/>	<input type="checkbox"/>
<input type="checkbox"/>	<input type="checkbox"/>	<input type="checkbox"/>	<input type="checkbox"/>	<input type="checkbox"/>	<input type="checkbox"/>	<input type="checkbox"/>	<input type="checkbox"/>	<input type="checkbox"/>	<input type="checkbox"/>
<input type="checkbox"/>	<input type="checkbox"/>	<input type="checkbox"/>	<input type="checkbox"/>	<input type="checkbox"/>	<input type="checkbox"/>	<input type="checkbox"/>	<input type="checkbox"/>	<input type="checkbox"/>	<input type="checkbox"/>
<input type="checkbox"/>	<input type="checkbox"/>	<input type="checkbox"/>	<input type="checkbox"/>	<input type="checkbox"/>	<input type="checkbox"/>	<input type="checkbox"/>	<input type="checkbox"/>	<input type="checkbox"/>	<input type="checkbox"/>
<input type="checkbox"/>	<input type="checkbox"/>	<input type="checkbox"/>	<input type="checkbox"/>	<input type="checkbox"/>	<input type="checkbox"/>	<input type="checkbox"/>	<input type="checkbox"/>	<input type="checkbox"/>	<input type="checkbox"/>
<input type="checkbox"/>	<input type="checkbox"/>	<input type="checkbox"/>	<input type="checkbox"/>	<input type="checkbox"/>	<input type="checkbox"/>	<input type="checkbox"/>	<input type="checkbox"/>	<input type="checkbox"/>	<input type="checkbox"/>
<input type="checkbox"/>	<input type="checkbox"/>	<input type="checkbox"/>	<input type="checkbox"/>	<input type="checkbox"/>	<input type="checkbox"/>	<input type="checkbox"/>	<input type="checkbox"/>	<input type="checkbox"/>	<input type="checkbox"/>
<input type="checkbox"/>	<input type="checkbox"/>	<input type="checkbox"/>	<input type="checkbox"/>	<input type="checkbox"/>	<input type="checkbox"/>	<input type="checkbox"/>	<input type="checkbox"/>	<input type="checkbox"/>	<input type="checkbox"/>
<input type="checkbox"/>	<input type="checkbox"/>	<input type="checkbox"/>	<input type="checkbox"/>	<input type="checkbox"/>	<input type="checkbox"/>	<input type="checkbox"/>	<input type="checkbox"/>	<input type="checkbox"/>	<input type="checkbox"/>
<input type="checkbox"/>	<input type="checkbox"/>	<input type="checkbox"/>	<input type="checkbox"/>	<input type="checkbox"/>	<input type="checkbox"/>	<input type="checkbox"/>	<input type="checkbox"/>	<input type="checkbox"/>	<input type="checkbox"/>
<input type="checkbox"/>	<input type="checkbox"/>	<input type="checkbox"/>	<input type="checkbox"/>	<input type="checkbox"/>	<input type="checkbox"/>	<input type="checkbox"/>	<input type="checkbox"/>	<input type="checkbox"/>	<input type="checkbox"/>
<input type="checkbox"/>	<input type="checkbox"/>	<input type="checkbox"/>	<input type="checkbox"/>	<input type="checkbox"/>	<input type="checkbox"/>	<input type="checkbox"/>	<input type="checkbox"/>	<input type="checkbox"/>	<input type="checkbox"/>
<input type="checkbox"/>	<input type="checkbox"/>	<input type="checkbox"/>	<input type="checkbox"/>	<input type="checkbox"/>	<input type="checkbox"/>	<input type="checkbox"/>	<input type="checkbox"/>	<input type="checkbox"/>	<input type="checkbox"/>
<input type="checkbox"/>	<input type="checkbox"/>	<input type="checkbox"/>	<input type="checkbox"/>	<input type="checkbox"/>	<input type="checkbox"/>	<input type="checkbox"/>	<input type="checkbox"/>	<input type="checkbox"/>	<input type="checkbox"/>
<input type="checkbox"/>	<input type="checkbox"/>	<input type="checkbox"/>	<input type="checkbox"/>	<input type="checkbox"/>	<input type="checkbox"/>	<input type="checkbox"/>	<input type="checkbox"/>	<input type="checkbox"/>	<input type="checkbox"/>
<input type="checkbox"/>	<input type="checkbox"/>	<input type="checkbox"/>	<input type="checkbox"/>	<input type="checkbox"/>	<input type="checkbox"/>	<input type="checkbox"/>	<input type="checkbox"/>	<input type="checkbox"/>	<input type="checkbox"/>
<input type="checkbox"/>	<input type="checkbox"/>	<input type="checkbox"/>	<input type="checkbox"/>	<input type="checkbox"/>	<input type="checkbox"/>	<input type="checkbox"/>	<input type="checkbox"/>	<input type="checkbox"/>	<input type="checkbox"/>
<input type="checkbox"/>	<input type="checkbox"/>	<input type="checkbox"/>	<input type="checkbox"/>	<input type="checkbox"/>	<input type="checkbox"/>	<input type="checkbox"/>	<input type="checkbox"/>	<input type="checkbox"/>	<input type="checkbox"/>
<input type="checkbox"/>	<input type="checkbox"/>	<input type="checkbox"/>	<input type="checkbox"/>	<input type="checkbox"/>	<input type="checkbox"/>	<input type="checkbox"/>	<input type="checkbox"/>	<input type="checkbox"/>	<input type="checkbox"/>
<input type="checkbox"/>	<input type="checkbox"/>	<input type="checkbox"/>	<input type="checkbox"/>	<input type="checkbox"/>	<input type="checkbox"/>	<input type="checkbox"/>	<input type="checkbox"/>	<input type="checkbox"/>	<input type="checkbox"/>
<input type="checkbox"/>	<input type="checkbox"/>	<input type="checkbox"/>	<input type="checkbox"/>	<input type="checkbox"/>	<input type="checkbox"/>	<input type="checkbox"/>	<input type="checkbox"/>	<input type="checkbox"/>	<input type="checkbox"/>
<input type="checkbox"/>	<input type="checkbox"/>	<input type="checkbox"/>	<input type="checkbox"/>	<input type="checkbox"/>	<input type="checkbox"/>	<input type="checkbox"/>	<input type="checkbox"/>	<input type="checkbox"/>	<input type="checkbox"/>
<input type="checkbox"/>	<input type="checkbox"/>	<input type="checkbox"/>	<input type="checkbox"/>	<input type="checkbox"/>	<input type="checkbox"/>	<input type="checkbox"/>	<input type="checkbox"/>	<input type="checkbox"/>	<input type="checkbox"/>
<input type="checkbox"/>	<input type="checkbox"/>	<input type="checkbox"/>	<input type="checkbox"/>	<input type="checkbox"/>	<input type="checkbox"/>	<input type="checkbox"/>	<input type="checkbox"/>	<input type="checkbox"/>	<input type="checkbox"/>
<input type="checkbox"/>	<input type="checkbox"/>	<input type="checkbox"/>	<input type="checkbox"/>	<input type="checkbox"/>	<input type="checkbox"/>	<input type="checkbox"/>	<input type="checkbox"/>	<input type="checkbox"/>	<input type="checkbox"/>
<input type="checkbox"/>	<input type="checkbox"/>	<input type="checkbox"/>	<input type="checkbox"/>	<input type="checkbox"/>	<input type="checkbox"/>	<input type="checkbox"/>	<input type="checkbox"/>	<input type="checkbox"/>	<input type="checkbox"/>
<input type="checkbox"/>	<input type="checkbox"/>	<input type="checkbox"/>	<input type="checkbox"/>	<input type="checkbox"/>	<input type="checkbox"/>	<input type="checkbox"/>	<input type="checkbox"/>	<input type="checkbox"/>	<input type="checkbox"/>
<input type="checkbox"/>	<input type="checkbox"/>	<input type="checkbox"/>	<input type="checkbox"/>	<input type="checkbox"/>	<input type="checkbox"/>	<input type="checkbox"/>	<input type="checkbox"/>	<input type="checkbox"/>	<input type="checkbox"/>
<input type="checkbox"/>	<input type="checkbox"/>	<input type="checkbox"/>	<input type="checkbox"/>	<input type="checkbox"/>	<input type="checkbox"/>	<input type="checkbox"/>	<input type="checkbox"/>	<input type="checkbox"/>	<input type="checkbox"/>
<input type="checkbox"/>	<input type="checkbox"/>	<input type="checkbox"/>	<input type="checkbox"/>	<input type="checkbox"/>	<input type="checkbox"/>	<input type="checkbox"/>	<input type="checkbox"/>	<input type="checkbox"/>	<input type="checkbox"/>
<input type="checkbox"/>	<input type="checkbox"/>	<input type="checkbox"/>	<input type="checkbox"/>	<input type="checkbox"/>	<input type="checkbox"/>	<input type="checkbox"/>	<input type="checkbox"/>	<input type="checkbox"/>	<input type="checkbox"/>
<input type="checkbox"/>	<input type="checkbox"/>	<input type="checkbox"/>	<input type="checkbox"/>	<input type="checkbox"/>	<input type="checkbox"/>	<input type="checkbox"/>	<input type="checkbox"/>	<input type="checkbox"/>	<input type="checkbox"/>
<input type="checkbox"/>	<input type="checkbox"/>	<input type="checkbox"/>	<input type="checkbox"/>	<input type="checkbox"/>	<input type="checkbox"/>	<input type="checkbox"/>	<input type="checkbox"/>	<input type="checkbox"/>	<input type="checkbox"/>
<input type="checkbox"/>	<input type="checkbox"/>	<input type="checkbox"/>	<input type="checkbox"/>	<input type="checkbox"/>	<input type="checkbox"/>	<input type="checkbox"/>	<input type="checkbox"/>	<input type="checkbox"/>	<input type="checkbox"/>
<input type="checkbox"/>	<input type="checkbox"/>	<input type="checkbox"/>	<input type="checkbox"/>	<input type="checkbox"/>	<input type="checkbox"/>	<input type="checkbox"/>	<input type="checkbox"/>	<input type="checkbox"/>	<input type="checkbox"/>
<input type="checkbox"/>	<input type="checkbox"/>	<input type="checkbox"/>	<input type="checkbox"/>	<input type="checkbox"/>	<input type="checkbox"/>	<input type="checkbox"/>	<input type="checkbox"/>	<input type="checkbox"/>	<input type="checkbox"/>
<input type="checkbox"/>	<input type="checkbox"/>	<input type="checkbox"/>	<input type="checkbox"/>	<input type="checkbox"/>	<input type="checkbox"/>	<input type="checkbox"/>	<input type="checkbox"/>	<input type="checkbox"/>	<input type="checkbox"/>
<input type="checkbox"/>	<input type="checkbox"/>	<input type="checkbox"/>	<input type="checkbox"/>	<input type="checkbox"/>	<input type="checkbox"/>	<input type="checkbox"/>	<input type="checkbox"/>	<input type="checkbox"/>	<input type="checkbox"/>
<input type="checkbox"/>	<input type="checkbox"/>	<input type="checkbox"/>	<input type="checkbox"/>	<input type="checkbox"/>	<input type="checkbox"/>	<input type="checkbox"/>	<input type="checkbox"/>	<input type="checkbox"/>	<input type="checkbox"/>
<input type="checkbox"/>	<input type="checkbox"/>	<input type="checkbox"/>	<input type="checkbox"/>	<input type="checkbox"/>	<input type="checkbox"/>	<input type="checkbox"/>	<input type="checkbox"/>	<input type="checkbox"/>	<input type="checkbox"/>
<input type="checkbox"/>	<input type="checkbox"/>	<input type="checkbox"/>	<input type="checkbox"/>	<input type="checkbox"/>	<input type="checkbox"/>	<input type="checkbox"/>	<input type="checkbox"/>	<input type="checkbox"/>	<input type="checkbox"/>
<input type="checkbox"/>	<input type="checkbox"/>	<input type="checkbox"/>	<input type="checkbox"/>	<input type="checkbox"/>	<input type="checkbox"/>	<input type="checkbox"/>	<input type="checkbox"/>	<input type="checkbox"/>	<input type="checkbox"/>
<input type="checkbox"/>	<input type="checkbox"/>	<input type="checkbox"/>	<input type="checkbox"/>	<input type="checkbox"/>	<input type="checkbox"/>	<input type="checkbox"/>	<input type="checkbox"/>	<input type="checkbox"/>	<input type="checkbox"/>
<input type="checkbox"/>	<input type="checkbox"/>	<input type="checkbox"/>	<input type="checkbox"/>	<input type="checkbox"/>	<input type="checkbox"/>	<input type="checkbox"/>	<input type="checkbox"/>	<input type="checkbox"/>	<input type="checkbox"/>
<input type="checkbox"/>	<input type="checkbox"/>	<input type="checkbox"/>	<input type="checkbox"/>	<input type="checkbox"/>	<input type="checkbox"/>	<input type="checkbox"/>	<input type="checkbox"/>	<input type="checkbox"/>	<input type="checkbox"/>
<input type="checkbox"/>	<input type="checkbox"/>	<input type="checkbox"/>	<input type="checkbox"/>	<input type="checkbox"/>	<input type="checkbox"/>	<input type="checkbox"/>	<input type="checkbox"/>	<input type="checkbox"/>	<input type="checkbox"/>
<input type="checkbox"/>	<input type="checkbox"/>	<input type="checkbox"/>	<input type="checkbox"/>	<input type="checkbox"/>	<input type="checkbox"/>	<input type="checkbox"/>	<input type="checkbox"/>	<input type="checkbox"/>	<input type="checkbox"/>
<input type="checkbox"/>	<input type="checkbox"/>	<input type="checkbox"/>	<input type="checkbox"/>	<input type="checkbox"/>	<input type="checkbox"/>	<input type="checkbox"/>	<input type="checkbox"/>	<input type="checkbox"/>	<input type="checkbox"/>
<input type="checkbox"/>	<input type="checkbox"/>	<input type="checkbox"/>	<input type="checkbox"/>	<input type="checkbox"/>	<input type="checkbox"/>	<input type="checkbox"/>	<input type="checkbox"/>	<input type="checkbox"/>	<input type="checkbox"/>
<input type="checkbox"/>	<input type="checkbox"/>	<input type="checkbox"/>	<input type="checkbox"/>	<input type="checkbox"/>	<input type="checkbox"/>	<input type="checkbox"/>	<input type="checkbox"/>	<input type="checkbox"/>	<input type="checkbox"/>
<input type="checkbox"/>	<input type="checkbox"/>	<input type="checkbox"/>	<input type="checkbox"/>	<input type="checkbox"/>	<input type="checkbox"/>	<input type="checkbox"/>	<input type="checkbox"/>	<input type="checkbox"/>	<input type="checkbox"/>
<input type="checkbox"/>	<input type="checkbox"/>	<input type="checkbox"/>	<input type="checkbox"/>	<input type="checkbox"/>	<input type="checkbox"/>	<input type="checkbox"/>	<input type="checkbox"/>	<input type="checkbox"/>	<input type="checkbox"/>
<input type="checkbox"/>	<input type="checkbox"/>	<input type="checkbox"/>	<input type="checkbox"/>	<input type="checkbox"/>	<input type="checkbox"/>	<input type="checkbox"/>	<input type="checkbox"/>	<input type="checkbox"/>	<input type="checkbox"/>
<input type="checkbox"/>	<input type="checkbox"/>	<input type="checkbox"/>	<input type="checkbox"/>	<input type="checkbox"/>	<input type="checkbox"/>	<input type="checkbox"/>	<input type="checkbox"/>	<input type="checkbox"/>	<input type="checkbox"/>
<input type="checkbox"/>	<input type="checkbox"/>	<input type="checkbox"/>	<input type="checkbox"/>	<input type="checkbox"/>	<input type="checkbox"/>	<input type="checkbox"/>	<input type="checkbox"/>	<input type="checkbox"/>	<input type="checkbox"/>
<input type="checkbox"/>	<input type="checkbox"/>	<input type="checkbox"/>	<input type="checkbox"/>	<input type="checkbox"/>	<input type="checkbox"/>	<input type="checkbox"/>	<input type="checkbox"/>	<input type="checkbox"/>	<input type="checkbox"/>
<input type="checkbox"/>	<input type="checkbox"/>	<input type="checkbox"/>	<input type="checkbox"/>	<input type="checkbox"/>	<input type="checkbox"/>	<input type="checkbox"/>	<input type="checkbox"/>	<input type="checkbox"/>	<input type="checkbox"/>
<input type="checkbox"/>	<input type="checkbox"/>	<input type="checkbox"/>	<input type="checkbox"/>	<input type="checkbox"/>	<input type="checkbox"/>	<input type="checkbox"/>	<input type="checkbox"/>	<input type="checkbox"/>	<input type="checkbox"/>
<input type="checkbox"/>	<input type="checkbox"/>	<input type="checkbox"/>	<input type="checkbox"/>	<input type="checkbox"/>	<input type="checkbox"/>	<input type="checkbox"/>	<input type="checkbox"/>	<input type="checkbox"/>	<input type="checkbox"/>
<input type="checkbox"/>	<input type="checkbox"/>	<input type="checkbox"/>	<input type="checkbox"/>	<input type="checkbox"/>	<input type="checkbox"/>	<input type="checkbox"/>	<input type="checkbox"/>	<input type="checkbox"/>	<input type="checkbox"/>
<input type="checkbox"/>	<input type="checkbox"/>	<input type="checkbox"/>	<input type="checkbox"/>	<input type="checkbox"/>	<input type="checkbox"/>	<input type="checkbox"/>	<input type="checkbox"/>	<input type="checkbox"/>	<input type="checkbox"/>
<input type="checkbox"/>	<input type="checkbox"/>	<input type="checkbox"/>	<input type="checkbox"/>	<input type="checkbox"/>	<input type="checkbox"/>	<input type="checkbox"/>	<input type="checkbox"/>	<input type="checkbox"/>	<input type="checkbox"/>
<input type="checkbox"/>	<input type="checkbox"/>	<input type="checkbox"/>	<input type="checkbox"/>	<input type="checkbox"/>	<input type="checkbox"/>	<input type="checkbox"/>	<input type="checkbox"/>	<input type="checkbox"/>	<input type="checkbox"/>
<input type="checkbox"/>	<input type="checkbox"/>	<input type="checkbox"/>	<input type="checkbox"/>	<input type="checkbox"/>	<input type="checkbox"/>	<input type="checkbox"/>	<input type="checkbox"/>	<input type="checkbox"/>	<input type="checkbox"/>
<input type="checkbox"/>	<input type="checkbox"/>	<input type="checkbox"/>	<input type="checkbox"/>	<input type="checkbox"/>	<input type="checkbox"/>	<input type="checkbox"/>	<input type="checkbox"/>	<input type="checkbox"/>	<input type="checkbox"/>
<input type="checkbox"/>	<input type="checkbox"/>	<input type="checkbox"/>	<input type="checkbox"/>	<input type="checkbox"/>	<input type="checkbox"/>	<input type="checkbox"/>	<input type="checkbox"/>	<input type="checkbox"/>	<input type="checkbox"/>
<input type="checkbox"/>	<input type="checkbox"/>	<input type="checkbox"/>	<input type="checkbox"/>	<input type="checkbox"/>	<input type="checkbox"/>	<input type="checkbox"/>	<input type="checkbox"/>	<input type="checkbox"/>	<input type="checkbox"/>
<input type="checkbox"/>	<input type="checkbox"/>	<input type="checkbox"/>	<input type="checkbox"/>	<input type="checkbox"/>	<input type="checkbox"/>	<input type="checkbox"/>	<input type="checkbox"/>	<input type="checkbox"/>	<input type="checkbox"/>
<input type="checkbox"/>	<input type="checkbox"/>	<input type="checkbox"/>	<input type="checkbox"/>	<input type="checkbox"/>	<input type="checkbox"/>	<input type="checkbox"/>	<input type="checkbox"/>	<input type="checkbox"/>	<input type="checkbox"/>
<input type="checkbox"/>	<input type="checkbox"/>	<input type="checkbox"/>	<input type="checkbox"/>	<input type="checkbox"/>	<input type="checkbox"/>	<input type="checkbox"/>	<input type="checkbox"/>	<input type="checkbox"/>	<input type="checkbox"/>
<input type="checkbox"/>	<input type="checkbox"/>	<input type="checkbox"/>	<input type="checkbox"/>	<input type="checkbox"/>	<input type="checkbox"/>	<input type="checkbox"/>	<input type="checkbox"/>	<input type="checkbox"/>	<input type="checkbox"/>
<input type="checkbox"/>	<input type="checkbox"/>	<input type="checkbox"/>	<input type="checkbox"/>	<input type="checkbox"/>	<input type="checkbox"/>	<input type="checkbox"/>	<input type="checkbox"/>	<input type="checkbox"/>	<input type="checkbox"/>
<input type="checkbox"/>	<input type="checkbox"/>	<input type="checkbox"/>	<input type="checkbox"/>	<input type="checkbox"/>	<input type="checkbox"/>	<input type="checkbox"/>	<input type="checkbox"/>	<input type="checkbox"/>	<input type="checkbox"/>
<input type="checkbox"/>	<input type="checkbox"/>	<input type="checkbox"/>	<input type="checkbox"/>	<input type="checkbox"/>	<input type="checkbox"/>	<input type="checkbox"/>	<input type="checkbox"/>	<input type="checkbox"/>	<input type="checkbox"/>
<input type="checkbox"/>	<input type="checkbox"/>	<input type="checkbox"/>	<input type="checkbox"/>	<input type="checkbox"/>	<input type="checkbox"/>	<input type="checkbox"/>	<input type="checkbox"/>	<input type="checkbox"/>	<input type="checkbox"/>
<input type="checkbox"/>	<input type="checkbox"/>	<input type="checkbox"/>	<input type="checkbox"/>	<input type="checkbox"/>	<input type="checkbox"/>	<input type="checkbox"/>	<input type="checkbox"/>	<input type="checkbox"/>	<input type="checkbox"/>
<input type="checkbox"/>	<input type="checkbox"/>	<input type="checkbox"/>	<input type="checkbox"/>	<input type="checkbox"/>	<input type="checkbox"/>	<input type="checkbox"/>	<input type="checkbox"/>	<input type="checkbox"/>	<input type="checkbox"/>
<input type="checkbox"/>	<input type="checkbox"/>	<input type="checkbox"/>	<input type="checkbox"/>	<input type="checkbox"/>	<input type="checkbox"/>	<input type="checkbox"/>	<input type="checkbox"/>	<input type="checkbox"/>	<input type="checkbox"/>
<input type="checkbox"/>	<input type="checkbox"/>	<input type="checkbox"/>	<input type="checkbox"/>	<input type="checkbox"/>	<input type="checkbox"/>	<input type="checkbox"/>	<input type="checkbox"/>	<input type="checkbox"/>	<input type="checkbox"/>
<input type="checkbox"/>	<input type="checkbox"/>	<input type="checkbox"/>	<input type="checkbox"/>	<input type="checkbox"/>	<input type="checkbox"/>	<input type="checkbox"/>	<input type="checkbox"/>	<input type="checkbox"/>	<input type="checkbox"/>
<input type="checkbox"/>	<input type="checkbox"/>	<input type="checkbox"/>	<input type="checkbox"/>	<input type="checkbox"/>	<input type="checkbox"/>	<input type="checkbox"/>	<input type="checkbox"/>	<input type="checkbox"/>	<input type="checkbox"/>
<input type="checkbox"/>	<input type="checkbox"/>	<input type="checkbox"/>	<input type="checkbox"/>	<input type="checkbox"/>	<input type="checkbox"/>	<input type="checkbox"/>	<input type="checkbox"/>	<input type="checkbox"/>	<input type="checkbox"/>
<input type="checkbox"/>	<input type="checkbox"/>	<input type="checkbox"/>	<input type="checkbox"/>	<input type="checkbox"/>	<input type="checkbox"/>	<input type="checkbox"/>	<input type="checkbox"/>	<input type="checkbox"/>	<input type="checkbox"/>
<input type="checkbox"/>	<input type="checkbox"/>	<input type="checkbox"/>	<input type="checkbox"/>	<input type="checkbox"/>	<input type="checkbox"/>	<input type="checkbox"/>	<input type="checkbox"/>	<input type="checkbox"/>	<input type="checkbox"/>
<input type="checkbox"/>	<input type="checkbox"/>	<input type="checkbox"/>	<input type="checkbox"/>	<input type="checkbox"/>	<input type="checkbox"/>	<input type="checkbox"/>	<input type="checkbox"/>	<input type="checkbox"/>	<input type="checkbox"/>
<input type="checkbox"/>	<input type="checkbox"/>	<input type="checkbox"/>	<input type="checkbox"/>	<input type="checkbox"/>	<input type="checkbox"/>	<input type="checkbox"/>	<input type="checkbox"/>	<input type="checkbox"/>	<input type="checkbox"/>
<input type="checkbox"/>	<input type="checkbox"/>	<input type="checkbox"/>	<input type="checkbox"/>	<input type="checkbox"/>	<input type="checkbox"/>	<input type="checkbox"/>	<input type="checkbox"/>	<input type="checkbox"/>	<input type="checkbox"/>
<input type="checkbox"/>	<input type="checkbox"/>	<input type="checkbox"/>	<input type="checkbox"/>	<input type="checkbox"/>	<input type="checkbox"/>	<input type="checkbox"/>	<input type="checkbox"/>	<input type="checkbox"/>	<input type="checkbox"/>
<input type="checkbox"/>	<input type="checkbox"/>	<input type="checkbox"/>	<input type="checkbox"/>	<input type="checkbox"/>	<input type="checkbox"/>	<input type="checkbox"/>	<input type="checkbox"/>	<input type="checkbox"/>	<input type="checkbox"/>
<input type="checkbox"/>	<input type="checkbox"/>	<input type="checkbox"/>	<input type="checkbox"/>	<input type="checkbox"/>	<input type="checkbox"/>	<input type="checkbox"/>	<input type="checkbox"/>	<input type="checkbox"/>	<input type="checkbox"/>
<input type="checkbox"/>	<input type="checkbox"/>	<input type="checkbox"/>	<input type="checkbox"/>	<input type="checkbox"/>	<input type="checkbox"/>	<input type="checkbox"/>	<input type="checkbox"/>	<input type="checkbox"/>	<input type="checkbox"/>
<input type="checkbox"/>	<input type="checkbox"/>	<input type="checkbox"/>	<input type="checkbox"/>	<input type="checkbox"/>	<input type="checkbox"/>	<input type="checkbox"/>	<input type="checkbox"/>	<input type="checkbox"/>	<input type="checkbox"/>
<input type="checkbox"/>	<input type="checkbox"/>	<input type="checkbox"/>	<input type="checkbox"/>	<input type="checkbox"/>	<input type="checkbox"/>	<input type="checkbox"/>	<input type="checkbox"/>	<input type="checkbox"/>	<input type="checkbox"/>
<input type="checkbox"/>	<input type="checkbox"/>	<input type="checkbox"/>	<input type="checkbox"/>	<input type="checkbox"/>	<input type="checkbox"/>	<input type="checkbox"/>	<input type="checkbox"/>	<input type="checkbox"/>	<input type="checkbox"/>
<input type="checkbox"/>	<input type="checkbox"/>	<input type="checkbox"/>	<input type="checkbox"/>	<input type="checkbox"/>	<input type="checkbox"/>	<input type="checkbox"/>	<input type="checkbox"/>	<input type="checkbox"/>	<input type="checkbox"/>
<input type="checkbox"/>	<input type="checkbox"/>	<input type="checkbox"/>	<input type="checkbox"/>	<input type="checkbox"/>	<input type="checkbox"/>	<input type="checkbox"/>	<input type="checkbox"/>	<input type="checkbox"/>	<input type="checkbox"/>
<input type="checkbox"/>	<input type="checkbox"/>	<input type="checkbox"/>	<input type="checkbox"/>	<input type="checkbox"/>	<input type="checkbox"/>	<input type="checkbox"/>	<input type="checkbox"/>	<input type="checkbox"/>	<input type="checkbox"/>
<input type="checkbox"/>	<input type="checkbox"/>	<input type="checkbox"/>	<input type="checkbox"/>	<input type="checkbox"/>	<input type="checkbox"/>	<input type="checkbox"/>	<input type="checkbox"/>	<input type="checkbox"/>	<input type="checkbox"/>
<input type="checkbox"/>	<input type="checkbox"/>	<input type="checkbox"/>	<input type="checkbox"/>	<input type="checkbox"/>	<input type="checkbox"/>	<input type="checkbox"/>	<input type="checkbox"/>	<input type="checkbox"/>	<input type="checkbox"/>
<input type="checkbox"/>	<input type="checkbox"/>	<input type="checkbox"/>	<input type="checkbox"/>	<input type="checkbox"/>	<input type="checkbox"/>	<input type="checkbox"/>	<input type="checkbox"/>	<input type="checkbox"/>	<input type="checkbox"/>
<input type="checkbox"/>	<input type="checkbox"/>	<input type="checkbox"/>	<input type="checkbox"/>	<input type="checkbox"/>	<input type="checkbox"/>	<input type="checkbox"/>	<input type="checkbox"/>	<input type="checkbox"/>	<input type="checkbox"/>
<input type="checkbox"/>	<input type="checkbox"/>	<input type="checkbox"/>	<input type="checkbox"/>	<input type="checkbox"/>	<input type="checkbox"/>	<input type="checkbox"/>	<input type="checkbox"/>	<input type="checkbox"/>	<input type="checkbox"/>
<input type="checkbox"/>	<input type="checkbox"/>	<input type="checkbox"/>	<input type="checkbox"/>	<input type="checkbox"/>	<input type="checkbox"/>	<input type="checkbox"/>	<input type="checkbox"/>	<input type="checkbox"/>	<input type="checkbox"/>
<input type="checkbox"/>	<input type="checkbox"/>	<input type="checkbox"/>	<input type="checkbox"/>	<input type="checkbox"/>	<input type="checkbox"/>	<input type="checkbox"/>	<input type="checkbox"/>	<input type="checkbox"/>	<input type="checkbox"/>
<input type="checkbox"/>	<input type="checkbox"/>	<input type="checkbox"/>	<input type="checkbox"/>	<input type="checkbox"/>	<input type="checkbox"/>	<input type="checkbox"/>	<input type="checkbox"/>	<input type="checkbox"/>	<input type="checkbox"/>
<input type="checkbox"/>	<input type="checkbox"/>	<input type="checkbox"/>	<input type="checkbox"/>	<input type="checkbox"/>	<input type="checkbox"/>	<input type="checkbox"/>	<input type="checkbox"/>	<input type="checkbox"/>	<input type="checkbox"/>
<input type="checkbox"/>	<input type="checkbox"/>	<input type="checkbox"/>	<input type="checkbox"/>	<input type="checkbox"/>	<input type="checkbox"/>	<input type="checkbox"/>	<input type="checkbox"/>	<input type="checkbox"/>	<input type="checkbox"/>
<input type="checkbox"/>	<input type="checkbox"/>	<input type="checkbox"/>	<input type="checkbox"/>	<input type="checkbox"/>	<input type="checkbox"/>	<input type="checkbox"/>	<input type="checkbox"/>	<input type="checkbox"/>	<input type="checkbox"/>
<input type="checkbox"/>	<input type="checkbox"/>	<input type="checkbox"/>	<input type="checkbox"/>	<input type="checkbox"/>	<input type="checkbox"/>	<input type="checkbox"/>	<input type="checkbox"/>	<input type="checkbox"/>	<input type="checkbox"/>
<input type="checkbox"/>	<input type="checkbox"/>	<input type="checkbox"/>	<input type="checkbox"/>	<input type="checkbox"/>	<input type="checkbox"/>	<input type="checkbox"/>	<input type="checkbox"/>	<input type="checkbox"/>	<input type="checkbox"/>
<input type="checkbox"/>	<input type="checkbox"/>	<input type="checkbox"/>	<input type="checkbox"/>	<input type="checkbox"/>	<input type="checkbox"/>	<input type="checkbox"/>	<input type="checkbox"/>	<input type="checkbox"/>	<input type="checkbox"/>
<input type="checkbox"/>	<input type="checkbox"/>	<input type="checkbox"/>	<input type="checkbox"/>	<input type="checkbox"/>	<input type="checkbox"/>	<input type="checkbox"/>	<input type="checkbox"/>	<input type="checkbox"/>	<input type="checkbox"/>
<input type="checkbox"/>	<input type="checkbox"/>	<input type="checkbox"/>	<input type="checkbox"/>	<input type="checkbox"/>	<input type="checkbox"/>	<input type="checkbox"/>	<input type="checkbox"/>	<input type="checkbox"/>	<input type="checkbox"/>
<input type="checkbox"/>	<input type="checkbox"/>	<input type="checkbox"/>	<input type="checkbox"/>	<input type="checkbox"/>	<input type="checkbox"/>	<input type="checkbox"/>	<input type="checkbox"/>	<input type="checkbox"/>	<input type="checkbox"/>
<input type="checkbox"/>	<input type="checkbox"/>	<input type="checkbox"/>	<input type="checkbox"/>	<input type="checkbox"/>	<input type="checkbox"/>	<input type="checkbox"/>	<input type="checkbox"/>	<input type="checkbox"/>	<input type="checkbox"/>
<input type="checkbox"/>	<input type="checkbox"/>	<input type="checkbox"/>	<input type="checkbox"/>	<input type="checkbox"/>	<input type="checkbox"/>	<input type="checkbox"/>	<input type="checkbox"/>	<input type="checkbox"/>	<input type="checkbox"/>
<input type="checkbox"/>	<input type="checkbox"/>	<input type="checkbox"/>	<input type="checkbox"/>	<input type="checkbox"/>	<input type="checkbox"/>	<input type="checkbox"/>	<input type="checkbox"/>	<input type="checkbox"/>	<input type="checkbox"/>
<input type="checkbox"/>	<input type="checkbox"/>	<input type="checkbox"/>	<input type="checkbox"/>	<input type="checkbox"/>	<input type="checkbox"/>	<input type="checkbox"/>	<input type="checkbox"/>	<input type="checkbox"/>	<input type="checkbox"/>
<input type="checkbox"/>	<input type="checkbox"/>	<input type="checkbox"/>	<input type="checkbox"/>	<input type="checkbox"/>	<input type="checkbox"/>	<input type="checkbox"/>	<input type="checkbox"/>	<input type="checkbox"/>	<input type="checkbox"/>
<input type="checkbox"/>	<input type="checkbox"/>	<input type="checkbox"/>	<input type="checkbox"/>	<input type="checkbox"/>	<input type="checkbox"/>	<input type="checkbox"/>	<input type="checkbox"/>	<input type="checkbox"/>	<input type="checkbox"/>
<input type="checkbox"/>	<input type="checkbox"/>	<input type="checkbox"/>	<input type="checkbox"/>	<input type="checkbox"/>	<input type="checkbox"/>	<input type="checkbox"/>	<input type="checkbox"/>	<input type="checkbox"/>	<input type="checkbox"/>
<input type="checkbox"/>	<input type="checkbox"/>	<input type="checkbox"/>	<input type="checkbox"/>	<input type="checkbox"/>	<input type="checkbox"/>	<input type="checkbox"/>	<input type="checkbox"/>	<input type="checkbox"/>	<input type="checkbox"/>
<input type="checkbox"/>	<input type="checkbox"/>	<input type="checkbox"/>							

12. Inspection plan Hailo PARTNER R1 Fall Arrester

Test schedule for regular testing of the Hailo PARTNER R1 fall arrester

Annual tests are to be documented in the table on pages 32-35 by trained/authorised personnel:

In the event of a claim, this documentation must be available in full as evidence. The manufacturer must be granted access to this at all times.

Result:



1. Hailo PARTNER R1 fall arrester, general condition	Check for damage, corrosion and contamination
2. Fall arrester housing	Technical condition
3. Slider right	Technical condition and function
4. Rail rollers	Ease of movement and technical condition
5. Anti-twist lock - ABOVE	Movement and function
6. Anti-twist lock - BELOW	Movement and function
7. Anti-twist lock pin	Technical condition
8. Brake lever	Movement, functional surfaces and technical condition
9. Brake lever (wear points)	Check thickness, min. > 0.05 mm, see page 21, D)
10. Brake lever - recuperating spring	Impact and condition
11. Screw connections	Technical condition and preload force
12. Cylinder pin (brake lever)	Seat, condition and any safety coating
13. Pins and dowel pins	Seat and condition
14. Shackle	Lock pin (safety sticker)
15. Brake lever protection	Securely attached and contour has cut edges
16. Cross axes	Function and movement
17. Release	Function and movement
18. BFD-50-136 shock absorber	Condition, stitching and supporting belt (blue belt)
19. BFD-50-136 shock absorber	Condition of packaging in heat-shrunk sleeve
20. Karabiner dip	Condition, function and safety catch
21. Original markings	Are the serial number, type details, etc., easily legible?
22. Hailo PARTNER R1 function test	Use on H-50 fall arrest system
23. Period of use of BFD-50-136	Has the period of use expired?
24. Test badge for Hailo PARTNER R1 fall arrester	Has a test badge been awarded



Inspection 6		Inspection 7		Inspection 8		Inspection 9		Inspection 10	
<div>/</div> <div>Date (Month/Year)</div>		<div>/</div> <div>Date (Month/Year)</div>		<div>/</div> <div>Date (Month/Year)</div>		<div>/</div> <div>Date (Month/Year)</div>		<div>/</div> <div>Date (Month/Year)</div>	
OK	not OK	OK	not OK	OK	not OK	OK	not OK	OK	not OK
<input type="checkbox"/>	<input type="checkbox"/>	<input type="checkbox"/>	<input type="checkbox"/>	<input type="checkbox"/>	<input type="checkbox"/>	<input type="checkbox"/>	<input type="checkbox"/>	<input type="checkbox"/>	<input type="checkbox"/>
<input type="checkbox"/>	<input type="checkbox"/>	<input type="checkbox"/>	<input type="checkbox"/>	<input type="checkbox"/>	<input type="checkbox"/>	<input type="checkbox"/>	<input type="checkbox"/>	<input type="checkbox"/>	<input type="checkbox"/>
<input type="checkbox"/>	<input type="checkbox"/>	<input type="checkbox"/>	<input type="checkbox"/>	<input type="checkbox"/>	<input type="checkbox"/>	<input type="checkbox"/>	<input type="checkbox"/>	<input type="checkbox"/>	<input type="checkbox"/>
<input type="checkbox"/>	<input type="checkbox"/>	<input type="checkbox"/>	<input type="checkbox"/>	<input type="checkbox"/>	<input type="checkbox"/>	<input type="checkbox"/>	<input type="checkbox"/>	<input type="checkbox"/>	<input type="checkbox"/>
<input type="checkbox"/>	<input type="checkbox"/>	<input type="checkbox"/>	<input type="checkbox"/>	<input type="checkbox"/>	<input type="checkbox"/>	<input type="checkbox"/>	<input type="checkbox"/>	<input type="checkbox"/>	<input type="checkbox"/>
<input type="checkbox"/>	<input type="checkbox"/>	<input type="checkbox"/>	<input type="checkbox"/>	<input type="checkbox"/>	<input type="checkbox"/>	<input type="checkbox"/>	<input type="checkbox"/>	<input type="checkbox"/>	<input type="checkbox"/>
<input type="checkbox"/>	<input type="checkbox"/>	<input type="checkbox"/>	<input type="checkbox"/>	<input type="checkbox"/>	<input type="checkbox"/>	<input type="checkbox"/>	<input type="checkbox"/>	<input type="checkbox"/>	<input type="checkbox"/>
<input type="checkbox"/>	<input type="checkbox"/>	<input type="checkbox"/>	<input type="checkbox"/>	<input type="checkbox"/>	<input type="checkbox"/>	<input type="checkbox"/>	<input type="checkbox"/>	<input type="checkbox"/>	<input type="checkbox"/>
<input type="checkbox"/>	<input type="checkbox"/>	<input type="checkbox"/>	<input type="checkbox"/>	<input type="checkbox"/>	<input type="checkbox"/>	<input type="checkbox"/>	<input type="checkbox"/>	<input type="checkbox"/>	<input type="checkbox"/>
<input type="checkbox"/>	<input type="checkbox"/>	<input type="checkbox"/>	<input type="checkbox"/>	<input type="checkbox"/>	<input type="checkbox"/>	<input type="checkbox"/>	<input type="checkbox"/>	<input type="checkbox"/>	<input type="checkbox"/>
<input type="checkbox"/>	<input type="checkbox"/>	<input type="checkbox"/>	<input type="checkbox"/>	<input type="checkbox"/>	<input type="checkbox"/>	<input type="checkbox"/>	<input type="checkbox"/>	<input type="checkbox"/>	<input type="checkbox"/>
<input type="checkbox"/>	<input type="checkbox"/>	<input type="checkbox"/>	<input type="checkbox"/>	<input type="checkbox"/>	<input type="checkbox"/>	<input type="checkbox"/>	<input type="checkbox"/>	<input type="checkbox"/>	<input type="checkbox"/>
<input type="checkbox"/>	<input type="checkbox"/>	<input type="checkbox"/>	<input type="checkbox"/>	<input type="checkbox"/>	<input type="checkbox"/>	<input type="checkbox"/>	<input type="checkbox"/>	<input type="checkbox"/>	<input type="checkbox"/>
<input type="checkbox"/>	<input type="checkbox"/>	<input type="checkbox"/>	<input type="checkbox"/>	<input type="checkbox"/>	<input type="checkbox"/>	<input type="checkbox"/>	<input type="checkbox"/>	<input type="checkbox"/>	<input type="checkbox"/>
<input type="checkbox"/>	<input type="checkbox"/>	<input type="checkbox"/>	<input type="checkbox"/>	<input type="checkbox"/>	<input type="checkbox"/>	<input type="checkbox"/>	<input type="checkbox"/>	<input type="checkbox"/>	<input type="checkbox"/>
<input type="checkbox"/>	<input type="checkbox"/>	<input type="checkbox"/>	<input type="checkbox"/>	<input type="checkbox"/>	<input type="checkbox"/>	<input type="checkbox"/>	<input type="checkbox"/>	<input type="checkbox"/>	<input type="checkbox"/>
<input type="checkbox"/>	<input type="checkbox"/>	<input type="checkbox"/>	<input type="checkbox"/>	<input type="checkbox"/>	<input type="checkbox"/>	<input type="checkbox"/>	<input type="checkbox"/>	<input type="checkbox"/>	<input type="checkbox"/>
<input type="checkbox"/>	<input type="checkbox"/>	<input type="checkbox"/>	<input type="checkbox"/>	<input type="checkbox"/>	<input type="checkbox"/>	<input type="checkbox"/>	<input type="checkbox"/>	<input type="checkbox"/>	<input type="checkbox"/>
<input type="checkbox"/>	<input type="checkbox"/>	<input type="checkbox"/>	<input type="checkbox"/>	<input type="checkbox"/>	<input type="checkbox"/>	<input type="checkbox"/>	<input type="checkbox"/>	<input type="checkbox"/>	<input type="checkbox"/>
<input type="checkbox"/>	<input type="checkbox"/>	<input type="checkbox"/>	<input type="checkbox"/>	<input type="checkbox"/>	<input type="checkbox"/>	<input type="checkbox"/>	<input type="checkbox"/>	<input type="checkbox"/>	<input type="checkbox"/>
<input type="checkbox"/>	<input type="checkbox"/>	<input type="checkbox"/>	<input type="checkbox"/>	<input type="checkbox"/>	<input type="checkbox"/>	<input type="checkbox"/>	<input type="checkbox"/>	<input type="checkbox"/>	<input type="checkbox"/>
<input type="checkbox"/>	<input type="checkbox"/>	<input type="checkbox"/>	<input type="checkbox"/>	<input type="checkbox"/>	<input type="checkbox"/>	<input type="checkbox"/>	<input type="checkbox"/>	<input type="checkbox"/>	<input type="checkbox"/>
<input type="checkbox"/>	<input type="checkbox"/>	<input type="checkbox"/>	<input type="checkbox"/>	<input type="checkbox"/>	<input type="checkbox"/>	<input type="checkbox"/>	<input type="checkbox"/>	<input type="checkbox"/>	<input type="checkbox"/>
<input type="checkbox"/>	<input type="checkbox"/>	<input type="checkbox"/>	<input type="checkbox"/>	<input type="checkbox"/>	<input type="checkbox"/>	<input type="checkbox"/>	<input type="checkbox"/>	<input type="checkbox"/>	<input type="checkbox"/>
<input type="checkbox"/>	<input type="checkbox"/>	<input type="checkbox"/>	<input type="checkbox"/>	<input type="checkbox"/>	<input type="checkbox"/>	<input type="checkbox"/>	<input type="checkbox"/>	<input type="checkbox"/>	<input type="checkbox"/>
<input type="checkbox"/>	<input type="checkbox"/>	<input type="checkbox"/>	<input type="checkbox"/>	<input type="checkbox"/>	<input type="checkbox"/>	<input type="checkbox"/>	<input type="checkbox"/>	<input type="checkbox"/>	<input type="checkbox"/>
<input type="checkbox"/>	<input type="checkbox"/>	<input type="checkbox"/>	<input type="checkbox"/>	<input type="checkbox"/>	<input type="checkbox"/>	<input type="checkbox"/>	<input type="checkbox"/>	<input type="checkbox"/>	<input type="checkbox"/>
<input type="checkbox"/>	<input type="checkbox"/>	<input type="checkbox"/>	<input type="checkbox"/>	<input type="checkbox"/>	<input type="checkbox"/>	<input type="checkbox"/>	<input type="checkbox"/>	<input type="checkbox"/>	<input type="checkbox"/>
<input type="checkbox"/>	<input type="checkbox"/>	<input type="checkbox"/>	<input type="checkbox"/>	<input type="checkbox"/>	<input type="checkbox"/>	<input type="checkbox"/>	<input type="checkbox"/>	<input type="checkbox"/>	<input type="checkbox"/>
<input type="checkbox"/>	<input type="checkbox"/>	<input type="checkbox"/>	<input type="checkbox"/>	<input type="checkbox"/>	<input type="checkbox"/>	<input type="checkbox"/>	<input type="checkbox"/>	<input type="checkbox"/>	<input type="checkbox"/>
<input type="checkbox"/>	<input type="checkbox"/>	<input type="checkbox"/>	<input type="checkbox"/>	<input type="checkbox"/>	<input type="checkbox"/>	<input type="checkbox"/>	<input type="checkbox"/>	<input type="checkbox"/>	<input type="checkbox"/>
<input type="checkbox"/>	<input type="checkbox"/>	<input type="checkbox"/>	<input type="checkbox"/>	<input type="checkbox"/>	<input type="checkbox"/>	<input type="checkbox"/>	<input type="checkbox"/>	<input type="checkbox"/>	<input type="checkbox"/>
<input type="checkbox"/>	<input type="checkbox"/>	<input type="checkbox"/>	<input type="checkbox"/>	<input type="checkbox"/>	<input type="checkbox"/>	<input type="checkbox"/>	<input type="checkbox"/>	<input type="checkbox"/>	<input type="checkbox"/>
<input type="checkbox"/>	<input type="checkbox"/>	<input type="checkbox"/>	<input type="checkbox"/>	<input type="checkbox"/>	<input type="checkbox"/>	<input type="checkbox"/>	<input type="checkbox"/>	<input type="checkbox"/>	<input type="checkbox"/>
<input type="checkbox"/>	<input type="checkbox"/>	<input type="checkbox"/>	<input type="checkbox"/>	<input type="checkbox"/>	<input type="checkbox"/>	<input type="checkbox"/>	<input type="checkbox"/>	<input type="checkbox"/>	<input type="checkbox"/>
<input type="checkbox"/>	<input type="checkbox"/>	<input type="checkbox"/>	<input type="checkbox"/>	<input type="checkbox"/>	<input type="checkbox"/>	<input type="checkbox"/>	<input type="checkbox"/>	<input type="checkbox"/>	<input type="checkbox"/>
<input type="checkbox"/>	<input type="checkbox"/>	<input type="checkbox"/>	<input type="checkbox"/>	<input type="checkbox"/>	<input type="checkbox"/>	<input type="checkbox"/>	<input type="checkbox"/>	<input type="checkbox"/>	<input type="checkbox"/>
<input type="checkbox"/>	<input type="checkbox"/>	<input type="checkbox"/>	<input type="checkbox"/>	<input type="checkbox"/>	<input type="checkbox"/>	<input type="checkbox"/>	<input type="checkbox"/>	<input type="checkbox"/>	<input type="checkbox"/>
<input type="checkbox"/>	<input type="checkbox"/>	<input type="checkbox"/>	<input type="checkbox"/>	<input type="checkbox"/>	<input type="checkbox"/>	<input type="checkbox"/>	<input type="checkbox"/>	<input type="checkbox"/>	<input type="checkbox"/>
<input type="checkbox"/>	<input type="checkbox"/>	<input type="checkbox"/>	<input type="checkbox"/>	<input type="checkbox"/>	<input type="checkbox"/>	<input type="checkbox"/>	<input type="checkbox"/>	<input type="checkbox"/>	<input type="checkbox"/>
<input type="checkbox"/>	<input type="checkbox"/>	<input type="checkbox"/>	<input type="checkbox"/>	<input type="checkbox"/>	<input type="checkbox"/>	<input type="checkbox"/>	<input type="checkbox"/>	<input type="checkbox"/>	<input type="checkbox"/>
<input type="checkbox"/>	<input type="checkbox"/>	<input type="checkbox"/>	<input type="checkbox"/>	<input type="checkbox"/>	<input type="checkbox"/>	<input type="checkbox"/>	<input type="checkbox"/>	<input type="checkbox"/>	<input type="checkbox"/>
<input type="checkbox"/>	<input type="checkbox"/>	<input type="checkbox"/>	<input type="checkbox"/>	<input type="checkbox"/>	<input type="checkbox"/>	<input type="checkbox"/>	<input type="checkbox"/>	<input type="checkbox"/>	<input type="checkbox"/>
<input type="checkbox"/>	<input type="checkbox"/>	<input type="checkbox"/>	<input type="checkbox"/>	<input type="checkbox"/>	<input type="checkbox"/>	<input type="checkbox"/>	<input type="checkbox"/>	<input type="checkbox"/>	<input type="checkbox"/>
<input type="checkbox"/>	<input type="checkbox"/>	<input type="checkbox"/>	<input type="checkbox"/>	<input type="checkbox"/>	<input type="checkbox"/>	<input type="checkbox"/>	<input type="checkbox"/>	<input type="checkbox"/>	<input type="checkbox"/>
<input type="checkbox"/>	<input type="checkbox"/>	<input type="checkbox"/>	<input type="checkbox"/>	<input type="checkbox"/>	<input type="checkbox"/>	<input type="checkbox"/>	<input type="checkbox"/>	<input type="checkbox"/>	<input type="checkbox"/>
<input type="checkbox"/>	<input type="checkbox"/>	<input type="checkbox"/>	<input type="checkbox"/>	<input type="checkbox"/>	<input type="checkbox"/>	<input type="checkbox"/>	<input type="checkbox"/>	<input type="checkbox"/>	<input type="checkbox"/>
<input type="checkbox"/>	<input type="checkbox"/>	<input type="checkbox"/>	<input type="checkbox"/>	<input type="checkbox"/>	<input type="checkbox"/>	<input type="checkbox"/>	<input type="checkbox"/>	<input type="checkbox"/>	<input type="checkbox"/>
<input type="checkbox"/>	<input type="checkbox"/>	<input type="checkbox"/>	<input type="checkbox"/>	<input type="checkbox"/>	<input type="checkbox"/>	<input type="checkbox"/>	<input type="checkbox"/>	<input type="checkbox"/>	<input type="checkbox"/>
<input type="checkbox"/>	<input type="checkbox"/>	<input type="checkbox"/>	<input type="checkbox"/>	<input type="checkbox"/>	<input type="checkbox"/>	<input type="checkbox"/>	<input type="checkbox"/>	<input type="checkbox"/>	<input type="checkbox"/>
<input type="checkbox"/>	<input type="checkbox"/>	<input type="checkbox"/>	<input type="checkbox"/>	<input type="checkbox"/>	<input type="checkbox"/>	<input type="checkbox"/>	<input type="checkbox"/>	<input type="checkbox"/>	<input type="checkbox"/>
<input type="checkbox"/>	<input type="checkbox"/>	<input type="checkbox"/>	<input type="checkbox"/>	<input type="checkbox"/>	<input type="checkbox"/>	<input type="checkbox"/>	<input type="checkbox"/>	<input type="checkbox"/>	<input type="checkbox"/>
<input type="checkbox"/>	<input type="checkbox"/>	<input type="checkbox"/>	<input type="checkbox"/>	<input type="checkbox"/>	<input type="checkbox"/>	<input type="checkbox"/>	<input type="checkbox"/>	<input type="checkbox"/>	<input type="checkbox"/>
<input type="checkbox"/>	<input type="checkbox"/>	<input type="checkbox"/>	<input type="checkbox"/>	<input type="checkbox"/>	<input type="checkbox"/>	<input type="checkbox"/>	<input type="checkbox"/>	<input type="checkbox"/>	<input type="checkbox"/>
<input type="checkbox"/>	<input type="checkbox"/>	<input type="checkbox"/>	<input type="checkbox"/>	<input type="checkbox"/>	<input type="checkbox"/>	<input type="checkbox"/>	<input type="checkbox"/>	<input type="checkbox"/>	<input type="checkbox"/>
<input type="checkbox"/>	<input type="checkbox"/>	<input type="checkbox"/>	<input type="checkbox"/>	<input type="checkbox"/>	<input type="checkbox"/>	<input type="checkbox"/>	<input type="checkbox"/>	<input type="checkbox"/>	<input type="checkbox"/>
<input type="checkbox"/>	<input type="checkbox"/>	<input type="checkbox"/>	<input type="checkbox"/>	<input type="checkbox"/>	<input type="checkbox"/>	<input type="checkbox"/>	<input type="checkbox"/>	<input type="checkbox"/>	<input type="checkbox"/>
<input type="checkbox"/>	<input type="checkbox"/>	<input type="checkbox"/>	<input type="checkbox"/>	<input type="checkbox"/>	<input type="checkbox"/>	<input type="checkbox"/>	<input type="checkbox"/>	<input type="checkbox"/>	<input type="checkbox"/>
<input type="checkbox"/>	<input type="checkbox"/>	<input type="checkbox"/>	<input type="checkbox"/>	<input type="checkbox"/>	<input type="checkbox"/>	<input type="checkbox"/>	<input type="checkbox"/>	<input type="checkbox"/>	<input type="checkbox"/>
<input type="checkbox"/>	<input type="checkbox"/>	<input type="checkbox"/>	<input type="checkbox"/>	<input type="checkbox"/>	<input type="checkbox"/>	<input type="checkbox"/>	<input type="checkbox"/>	<input type="checkbox"/>	<input type="checkbox"/>
<input type="checkbox"/>	<input type="checkbox"/>	<input type="checkbox"/>	<input type="checkbox"/>	<input type="checkbox"/>	<input type="checkbox"/>	<input type="checkbox"/>	<input type="checkbox"/>	<input type="checkbox"/>	<input type="checkbox"/>
<input type="checkbox"/>	<input type="checkbox"/>	<input type="checkbox"/>	<input type="checkbox"/>	<input type="checkbox"/>	<input type="checkbox"/>	<input type="checkbox"/>	<input type="checkbox"/>	<input type="checkbox"/>	<input type="checkbox"/>
<input type="checkbox"/>	<input type="checkbox"/>	<input type="checkbox"/>	<input type="checkbox"/>	<input type="checkbox"/>	<input type="checkbox"/>	<input type="checkbox"/>	<input type="checkbox"/>	<input type="checkbox"/>	<input type="checkbox"/>
<input type="checkbox"/>	<input type="checkbox"/>	<input type="checkbox"/>	<input type="checkbox"/>	<input type="checkbox"/>	<input type="checkbox"/>	<input type="checkbox"/>	<input type="checkbox"/>	<input type="checkbox"/>	<input type="checkbox"/>
<input type="checkbox"/>	<input type="checkbox"/>	<input type="checkbox"/>	<input type="checkbox"/>	<input type="checkbox"/>	<input type="checkbox"/>	<input type="checkbox"/>	<input type="checkbox"/>	<input type="checkbox"/>	<input type="checkbox"/>
<input type="checkbox"/>	<input type="checkbox"/>	<input type="checkbox"/>	<input type="checkbox"/>	<input type="checkbox"/>	<input type="checkbox"/>	<input type="checkbox"/>	<input type="checkbox"/>	<input type="checkbox"/>	<input type="checkbox"/>
<input type="checkbox"/>	<input type="checkbox"/>	<input type="checkbox"/>	<input type="checkbox"/>	<input type="checkbox"/>	<input type="checkbox"/>	<input type="checkbox"/>	<input type="checkbox"/>	<input type="checkbox"/>	<input type="checkbox"/>
<input type="checkbox"/>	<input type="checkbox"/>	<input type="checkbox"/>	<input type="checkbox"/>	<input type="checkbox"/>	<input type="checkbox"/>	<input type="checkbox"/>	<input type="checkbox"/>	<input type="checkbox"/>	<input type="checkbox"/>
<input type="checkbox"/>	<input type="checkbox"/>	<input type="checkbox"/>	<input type="checkbox"/>	<input type="checkbox"/>	<input type="checkbox"/>	<input type="checkbox"/>	<input type="checkbox"/>	<input type="checkbox"/>	<input type="checkbox"/>
<input type="checkbox"/>	<input type="checkbox"/>	<input type="checkbox"/>	<input type="checkbox"/>	<input type="checkbox"/>	<input type="checkbox"/>	<input type="checkbox"/>	<input type="checkbox"/>	<input type="checkbox"/>	<input type="checkbox"/>
<input type="checkbox"/>	<input type="checkbox"/>	<input type="checkbox"/>	<input type="checkbox"/>	<input type="checkbox"/>	<input type="checkbox"/>	<input type="checkbox"/>	<input type="checkbox"/>	<input type="checkbox"/>	<input type="checkbox"/>
<input type="checkbox"/>	<input type="checkbox"/>	<input type="checkbox"/>	<input type="checkbox"/>	<input type="checkbox"/>	<input type="checkbox"/>	<input type="checkbox"/>	<input type="checkbox"/>	<input type="checkbox"/>	<input type="checkbox"/>
<input type="checkbox"/>	<input type="checkbox"/>	<input type="checkbox"/>	<input type="checkbox"/>	<input type="checkbox"/>	<input type="checkbox"/>	<input type="checkbox"/>	<input type="checkbox"/>	<input type="checkbox"/>	<input type="checkbox"/>
<input type="checkbox"/>	<input type="checkbox"/>	<input type="checkbox"/>	<input type="checkbox"/>	<input type="checkbox"/>	<input type="checkbox"/>	<input type="checkbox"/>	<input type="checkbox"/>	<input type="checkbox"/>	<input type="checkbox"/>
<input type="checkbox"/>	<input type="checkbox"/>	<input type="checkbox"/>	<input type="checkbox"/>	<input type="checkbox"/>	<input type="checkbox"/>	<input type="checkbox"/>	<input type="checkbox"/>	<input type="checkbox"/>	<input type="checkbox"/>
<input type="checkbox"/>	<input type="checkbox"/>	<input type="checkbox"/>	<input type="checkbox"/>	<input type="checkbox"/>	<input type="checkbox"/>	<input type="checkbox"/>	<input type="checkbox"/>	<input type="checkbox"/>	<input type="checkbox"/>
<input type="checkbox"/>	<input type="checkbox"/>	<input type="checkbox"/>	<input type="checkbox"/>	<input type="checkbox"/>	<input type="checkbox"/>	<input type="checkbox"/>	<input type="checkbox"/>	<input type="checkbox"/>	<input type="checkbox"/>
<input type="checkbox"/>	<input type="checkbox"/>	<input type="checkbox"/>	<input type="checkbox"/>	<input type="checkbox"/>	<input type="checkbox"/>	<input type="checkbox"/>	<input type="checkbox"/>	<input type="checkbox"/>	<input type="checkbox"/>
<input type="checkbox"/>	<input type="checkbox"/>	<input type="checkbox"/>	<input type="checkbox"/>	<input type="checkbox"/>	<input type="checkbox"/>	<input type="checkbox"/>	<input type="checkbox"/>	<input type="checkbox"/>	<input type="checkbox"/>
<input type="checkbox"/>	<input type="checkbox"/>	<input type="checkbox"/>	<input type="checkbox"/>	<input type="checkbox"/>	<input type="checkbox"/>	<input type="checkbox"/>	<input type="checkbox"/>	<input type="checkbox"/>	<input type="checkbox"/>
<input type="checkbox"/>	<input type="checkbox"/>	<input type="checkbox"/>	<input type="checkbox"/>	<input type="checkbox"/>	<input type="checkbox"/>	<input type="checkbox"/>	<input type="checkbox"/>	<input type="checkbox"/>	<input type="checkbox"/>
<input type="checkbox"/>	<input type="checkbox"/>	<input type="checkbox"/>	<input type="checkbox"/>	<input type="checkbox"/>	<input type="checkbox"/>	<input type="checkbox"/>	<input type="checkbox"/>	<input type="checkbox"/>	<input type="checkbox"/>
<input type="checkbox"/>	<input type="checkbox"/>	<input type="checkbox"/>	<input type="checkbox"/>	<input type="checkbox"/>	<input type="checkbox"/>	<input type="checkbox"/>	<input type="checkbox"/>	<input type="checkbox"/>	<input type="checkbox"/>
<input type="checkbox"/>	<input type="checkbox"/>	<input type="checkbox"/>	<input type="checkbox"/>	<input type="checkbox"/>	<input type="checkbox"/>	<input type="checkbox"/>	<input type="checkbox"/>	<input type="checkbox"/>	<input type="checkbox"/>
<input type="checkbox"/>	<input type="checkbox"/>	<input type="checkbox"/>	<input type="checkbox"/>	<input type="checkbox"/>	<input type="checkbox"/>	<input type="checkbox"/>	<input type="checkbox"/>	<input type="checkbox"/>	<input type="checkbox"/>
<input type="checkbox"/>	<input type="checkbox"/>	<input type="checkbox"/>	<input type="checkbox"/>	<input type="checkbox"/>	<input type="checkbox"/>	<input type="checkbox"/>	<input type="checkbox"/>	<input type="checkbox"/>	<input type="checkbox"/>
<input type="checkbox"/>	<input type="checkbox"/>	<input type="checkbox"/>	<input type="checkbox"/>	<input type="checkbox"/>	<input type="checkbox"/>	<input type="checkbox"/>	<input type="checkbox"/>	<input type="checkbox"/>	<input type="checkbox"/>
<input type="checkbox"/>	<input type="checkbox"/>	<input type="checkbox"/>	<input type="checkbox"/>	<input type="checkbox"/>	<input type="checkbox"/>	<input type="checkbox"/>	<input type="checkbox"/>	<input type="checkbox"/>	<input type="checkbox"/>
<input type="checkbox"/>	<input type="checkbox"/>	<input type="checkbox"/>	<input type="checkbox"/>	<input type="checkbox"/>	<input type="checkbox"/>	<input type="checkbox"/>	<input type="checkbox"/>	<input type="checkbox"/>	<input type="checkbox"/>
<input type="checkbox"/>	<input type="checkbox"/>	<input type="checkbox"/>	<input type="checkbox"/>	<input type="checkbox"/>	<input type="checkbox"/>	<input type="checkbox"/>	<input type="checkbox"/>	<input type="checkbox"/>	<input type="checkbox"/>
<input type="checkbox"/>	<input type="checkbox"/>	<input type="checkbox"/>	<input type="checkbox"/>	<input type="checkbox"/>	<input type="checkbox"/>	<input type="checkbox"/>	<input type="checkbox"/>	<input type="checkbox"/>	<input type="checkbox"/>
<input type="checkbox"/>	<input type="checkbox"/>	<input type="checkbox"/>	<input type="checkbox"/>	<input type="checkbox"/>	<input type="checkbox"/>	<input type="checkbox"/>	<input type="checkbox"/>	<input type="checkbox"/>	<input type="checkbox"/>
<input type="checkbox"/>	<input type="checkbox"/>	<input type="checkbox"/>	<input type="checkbox"/>	<input type="checkbox"/>	<input type="checkbox"/>	<input type="checkbox"/>	<input type="checkbox"/>	<input type="checkbox"/>	<input type="checkbox"/>
<input type="checkbox"/>	<input type="checkbox"/>	<input type="checkbox"/>	<input type="checkbox"/>	<input type="checkbox"/>	<input type="checkbox"/>	<input type="checkbox"/>	<input type="checkbox"/>	<input type="checkbox"/>	<input type="checkbox"/>
<input type="checkbox"/>	<input type="checkbox"/>	<input type="checkbox"/>	<input type="checkbox"/>	<input type="checkbox"/>	<input type="checkbox"/>	<input type="checkbox"/>	<input type="checkbox"/>	<input type="checkbox"/>	<input type="checkbox"/>
<input type="checkbox"/>	<input type="checkbox"/>	<input type="checkbox"/>	<input type="checkbox"/>	<input type="checkbox"/>	<input type="checkbox"/>	<input type="checkbox"/>	<input type="checkbox"/>	<input type="checkbox"/>	<input type="checkbox"/>
<input type="checkbox"/>	<input type="checkbox"/>	<input type="checkbox"/>	<input type="checkbox"/>	<input type="checkbox"/>	<input type="checkbox"/>	<input type="checkbox"/>	<input type="checkbox"/>	<input type="checkbox"/>	<input type="checkbox"/>
<input type="checkbox"/>	<input type="checkbox"/>	<input type="checkbox"/>	<input type="checkbox"/>	<input type="checkbox"/>	<input type="checkbox"/>	<input type="checkbox"/>	<input type="checkbox"/>	<input type="checkbox"/>	<input type="checkbox"/>
<input type="checkbox"/>	<input type="checkbox"/>	<input type="checkbox"/>	<input type="checkbox"/>	<input type="checkbox"/>	<input type="checkbox"/>	<input type="checkbox"/>	<input type="checkbox"/>	<input type="checkbox"/>	<input type="checkbox"/>
<input type="checkbox"/>	<input type="checkbox"/>	<input type="checkbox"/>	<input type="checkbox"/>	<input type="checkbox"/>	<input type="checkbox"/>	<input type="checkbox"/>	<input type="checkbox"/>	<input type="checkbox"/>	<input type="checkbox"/>
<input type="checkbox"/>	<input type="checkbox"/>	<input type="checkbox"/>	<input type="checkbox"/>	<input type="checkbox"/>	<input type="checkbox"/>	<input type="checkbox"/>	<input type="checkbox"/>	<input type="checkbox"/>	<input type="checkbox"/>
<input type="checkbox"/>	<input type="checkbox"/>	<input type="checkbox"/>	<input type="checkbox"/>	<input type="checkbox"/>	<input type="checkbox"/>	<input type="checkbox"/>	<input type="checkbox"/>	<input type="checkbox"/>	<input type="checkbox"/>
<input type="checkbox"/>	<input type="checkbox"/>	<input type="checkbox"/>	<input type="checkbox"/>	<input type="checkbox"/>	<input type="checkbox"/>	<input type="checkbox"/>	<input type="checkbox"/>	<input type="checkbox"/>	<input type="checkbox"/>
<input type="checkbox"/>	<input type="checkbox"/>	<input type="checkbox"/>	<input type="checkbox"/>	<input type="checkbox"/>	<input type="checkbox"/>	<input type="checkbox"/>	<input type="checkbox"/>	<input type="checkbox"/>	<input type="checkbox"/>
<input type="checkbox"/>	<input type="checkbox"/>	<input type="checkbox"/>	<input type="checkbox"/>	<input type="checkbox"/>	<input type="checkbox"/>	<input type="checkbox"/>	<input type="checkbox"/>	<input type="checkbox"/>	<input type="checkbox"/>
<input type="checkbox"/>	<input type="checkbox"/>	<input type="checkbox"/>	<input type="checkbox"/>	<input type="checkbox"/>	<input type="checkbox"/>	<input type="checkbox"/>	<input type="checkbox"/>	<input type="checkbox"/>	<input type="checkbox"/>
<input type="checkbox"/>	<input type="checkbox"/>	<input type="checkbox"/>	<input type="checkbox"/>	<input type="checkbox"/>	<input type="checkbox"/>	<input type="checkbox"/>	<input type="checkbox"/>	<input type="checkbox"/>	<input type="checkbox"/>
<input type="checkbox"/>	<input type="checkbox"/>	<input type="checkbox"/>	<input type="checkbox"/>	<input type="checkbox"/>	<input type="checkbox"/>	<input type="checkbox"/>	<input type="checkbox"/>	<input type="checkbox"/>	<input type="checkbox"/>
<input type="checkbox"/>	<input type="checkbox"/>	<input type="checkbox"/>	<input type="checkbox"/>	<input type="checkbox"/>	<input type="checkbox"/>	<input type="checkbox"/>	<input type="checkbox"/>	<input type="checkbox"/>	<input type="checkbox"/>
<input type="checkbox"/>	<input type="checkbox"/>	<input type="checkbox"/>	<input type="checkbox"/>	<input type="checkbox"/>	<input type="checkbox"/>	<input type="checkbox"/>	<input type="checkbox"/>	<input type="checkbox"/>	<input type="checkbox"/>
<input type="checkbox"/>	<input type="checkbox"/>	<input type="checkbox"/>	<input type="checkbox"/>	<input type="checkbox"/>	<input type="checkbox"/>	<input type="checkbox"/>	<input type="checkbox"/>	<input type="checkbox"/>	<input type="checkbox"/>
<input type="checkbox"/>	<input type="checkbox"/>	<input type="checkbox"/>	<input type="checkbox"/>	<input type="checkbox"/>	<input type="checkbox"/>	<input type="checkbox"/>	<input type="checkbox"/>	<input type="checkbox"/>	<input type="checkbox"/>
<input type="checkbox"/>	<input type="checkbox"/>	<input type="checkbox"/>	<input type="checkbox"/>	<input type="checkbox"/>	<input type="checkbox"/>	<input type="checkbox"/>	<input type="checkbox"/>	<input type="checkbox"/>	<input type="checkbox"/>
<input type="checkbox"/>	<input type="checkbox"/>	<input type="checkbox"/>	<input type="checkbox"/>	<input type="checkbox"/>	<input type="checkbox"/>	<input type="checkbox"/>	<input type="checkbox"/>	<input type="checkbox"/>	<input type="checkbox"/>
<input type="checkbox"/>	<input type="checkbox"/>	<input type="checkbox"/>	<input type="checkbox"/>	<input type="checkbox"/>	<input type="checkbox"/>	<input type="checkbox"/>	<input type="checkbox"/>	<input type="checkbox"/>	<input type="checkbox"/>
<input type="checkbox"/>	<input type="checkbox"/>	<input type="checkbox"/>	<input type="checkbox"/>	<input type="checkbox"/>	<input type="checkbox"/>	<input type="checkbox"/>	<input type="checkbox"/>	<input type="checkbox"/>	<input type="checkbox"/>
<input type="checkbox"/>	<input type="checkbox"/>	<input type="checkbox"/>	<input type="checkbox"/>	<input type="checkbox"/>	<input type="checkbox"/>	<input type="checkbox"/>	<input type="checkbox"/>	<input type="checkbox"/>	<input type="checkbox"/>
<input type="checkbox"/>	<input type="checkbox"/>	<input type="checkbox"/>	<input type="checkbox"/>	<input type="checkbox"/>	<input type="checkbox"/>	<input type="checkbox"/>	<input type="checkbox"/>	<input type="checkbox"/>	<input type="checkbox"/>
<input type="checkbox"/>	<input type="checkbox"/>	<input type="checkbox"/>	<input type="checkbox"/>	<input type="checkbox"/>	<input type="checkbox"/>	<input type="checkbox"/>	<input type="checkbox"/>	<input type="checkbox"/>	<input type="checkbox"/>
<input type="checkbox"/>	<input type="checkbox"/>	<input type="checkbox"/>	<input type="checkbox"/>	<input type="checkbox"/>	<input type="checkbox"/>	<input type="checkbox"/>	<input type="checkbox"/>	<input type="checkbox"/>	<input type="checkbox"/>
<input type="checkbox"/>	<input type="checkbox"/>	<input type="checkbox"/>	<input type="checkbox"/>	<input type="checkbox"/>	<input type="checkbox"/>	<input type="checkbox"/>	<input type="checkbox"/>	<input type="checkbox"/>	<input type="checkbox"/>
<input type="checkbox"/>	<input type="checkbox"/>	<input type="checkbox"/>	<input type="checkbox"/>	<input type="checkbox"/>	<input type="checkbox"/>	<input type="checkbox"/>	<input type="checkbox"/>	<input type="checkbox"/>	<input type="checkbox"/>
<input type="checkbox"/>	<input type="checkbox"/>	<input type="checkbox"/>	<input type="checkbox"/>	<input type="checkbox"/>	<input type="checkbox"/>	<input type="checkbox"/>	<input type="checkbox"/>	<input type="checkbox"/>	<input type="checkbox"/>
<input type="checkbox"/>	<input type="checkbox"/>	<input type="checkbox"/>	<input type="checkbox"/>	<input type="checkbox"/>	<input type="checkbox"/>	<input type="checkbox"/>	<input type="checkbox"/>	<input type="checkbox"/>	<input type="checkbox"/>
<input type="checkbox"/>	<input type="checkbox"/>	<input type="checkbox"/>	<input type="checkbox"/>	<input type="checkbox"/>	<input type="checkbox"/>	<input type="checkbox"/>	<input type="checkbox"/>	<input type="checkbox"/>	<input type="checkbox"/>
<input type="checkbox"/>	<input type="checkbox"/>	<input type="checkbox"/>	<input type="checkbox"/>	<input type="checkbox"/>	<input type="checkbox"/>	<input type="checkbox"/>	<input type="checkbox"/>	<input type="checkbox"/>	<input type="checkbox"/>
<input type="checkbox"/>	<input type="checkbox"/>	<input type="checkbox"/>	<input type="checkbox"/>	<input type="checkbox"/>	<input type="checkbox"/>	<input type="checkbox"/>	<input type="checkbox"/>	<input type="checkbox"/>	<input type="checkbox"/>
<input type="checkbox"/>	<input type="checkbox"/>	<input type="checkbox"/>	<input type="checkbox"/>	<input type="checkbox"/>	<input type="checkbox"/>	<input type="checkbox"/>	<input type="checkbox"/>	<input type="checkbox"/>	<input type="checkbox"/>
<input type="checkbox"/>	<input type="checkbox"/>	<input type="checkbox"/>	<input type="checkbox"/>						

13. Documentation of the Inspection

Documentation for conducting regular inspections and/or repairs

<i>Product description</i>	<i>Manufacturer / Supplier</i>
Hailo PARTNER R1 fall arrester	Hailo-Werk, Rudolf Loh GmbH & Co. KG Daimlerstraße 2, 35708 Haiger, Germany
<i>Identification mark</i>	 +49 (0) 2773 82-0  +49 (0) 2773 82-1561
Serial number (see type-plate)	info@hailo-professional.de www.hailo-professional.de

Date	Reason of work: a) Regular check b) Repair	Test outcome of the periodic inspection	



(Copy this double page when additional information needs to be entered)

<i>Date of manufacture / Expiry date</i>	<i>Date of the first use</i>
<i>Date of purchase</i>	<i>Further information</i>

	<i>Repairs carried out</i>	<i>Name and signature of expert</i>	<i>Date of next regular check</i>

13. Documentation of the Inspection

Documentation for conducting regular inspections and/or repairs

<i>Product description</i>	<i>Manufacturer / Supplier</i>
Hailo PARTNER R1 fall arrester	Hailo-Werk, Rudolf Loh GmbH & Co. KG Daimlerstraße 2, 35708 Haiger, Germany
<i>Identification mark</i>	 +49 (0) 2773 82-0  +49 (0) 2773 82-1561
Serial number (see type-plate)	info@hailo-professional.de www.hailo-professional.de

Date	Reason of work: a) Regular check b) Repair	Test outcome of the periodic inspection	



(Copy this double page when additional information needs to be entered)

<i>Date of manufacture / Expiry date</i>	<i>Date of the first use</i>
<i>Date of purchase</i>	<i>Further information</i>

	<i>Repairs carried out</i>	<i>Name and signature of expert</i>	<i>Date of next regular check</i>

14. Replacement of BFD-50-136 Shock Absorber (Documentation)

Documentation covering regular replacement of BFD-50-136 shock absorber (every 5 years)

<i>Product description</i>	<i>Manufacturer / Supplier</i>
BFD-50-136 shock absorber	Hailo-Werk, Rudolf Loh GmbH & Co. KG Daimlerstraße 2, 35708 Haiger, Germany
<i>Identification mark</i>	 +49 (0) 2773 82-0  +49 (0) 2773 82-1561 info@hailo-professional.de www.hailo-professional.de
Serial number (see type-plate)	

Date	New production number BFD-50-136 shock absorber	Expiry date	



(Copy this double page when additional information needs to be entered)

<i>Date of manufacture</i>	<i>Date of purchase</i>	<i>Date of the first use</i>
<i>Expiry date</i>	<i>Further information</i>	

	<i>Carried out by: name and signature</i>

The information concerning the BFD-50-136 shock absorber is to be entered by the manufacturer and its replacement is to be documented in the table.

The BFD-50-136 shock absorber may only be replaced by the manufacturer:

- a) Replace shock absorber and shackle
- b) Fit shackle bolts with safety stickers

[illegible]



Should the Hailo PARTNER R1 fall arrester be sold on to another country, then for user safety it is necessary that this information booklet be available to him in the respective language of his country.

This information booklet is also available in the current official language of the destination country.

For more information, please visit
info@hailo-professional.de

or contact:

Hailo-Werk
Rudolf Loh GmbH & Co. KG
Daimlerstraße 2
35708 Haiger, Germany



Hailo-Werk • Rudolf Loh GmbH & Co. KG • Daimlerstraße 2 • 35708 Haiger, Germany

 +49 (0) 2773 82-0 •  +49 (0) 2773 82-1561

www.hailo-professional.de • E-Mail: info@hailo-professional.de